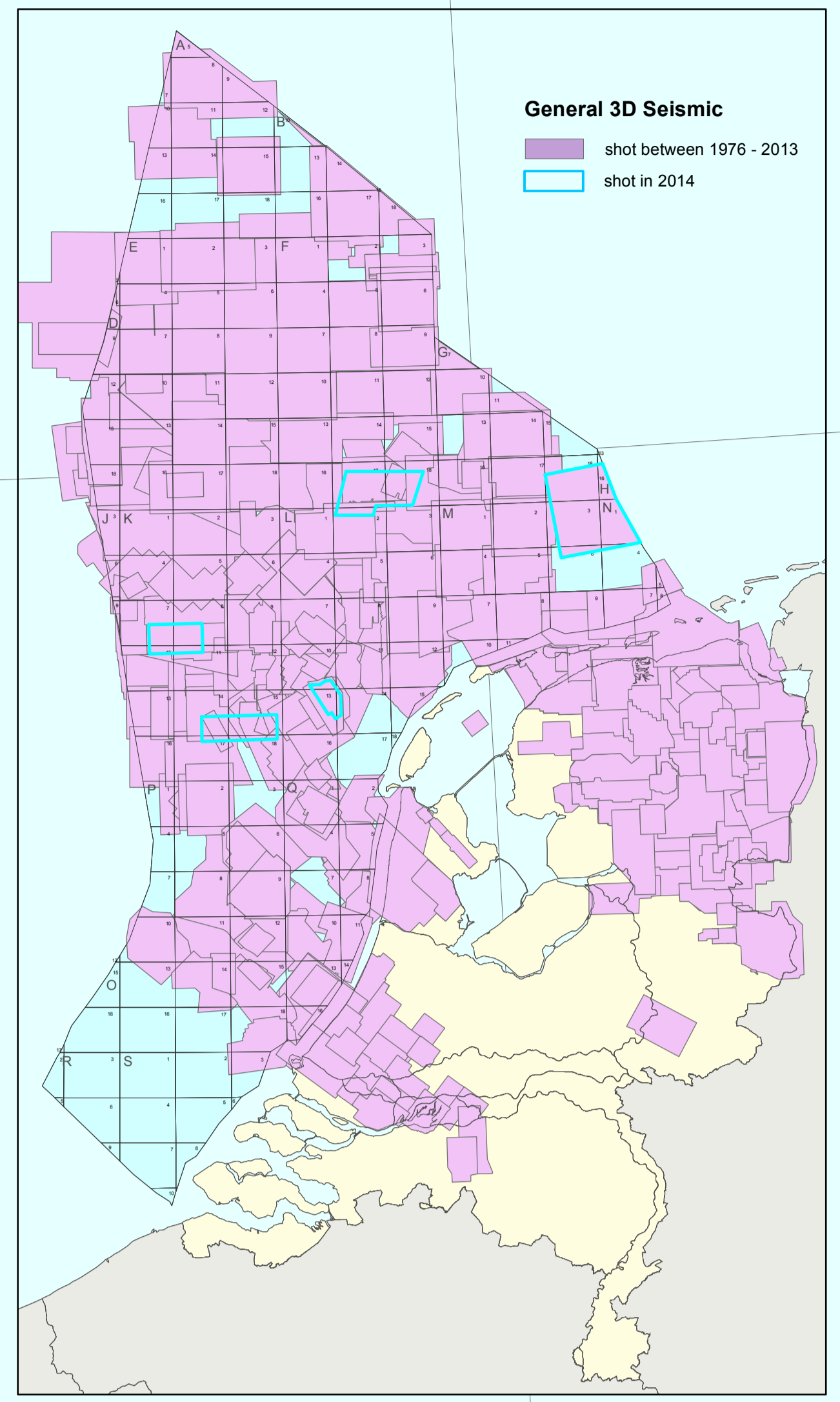
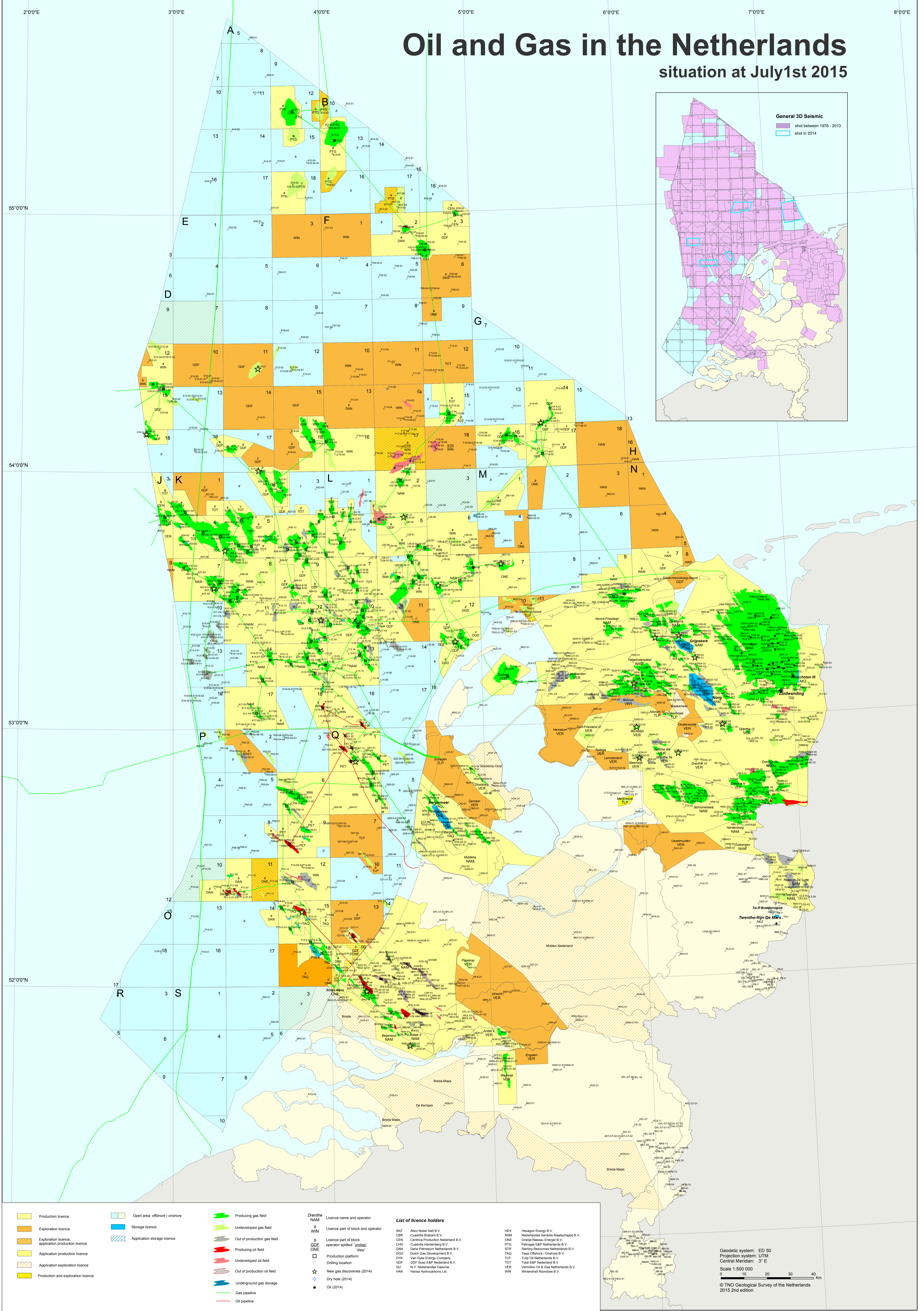


# Oil and Gas in the Netherlands

## situation at July 1st 2015



- |   |                               |                             |                            |   |
|---|-------------------------------|-----------------------------|----------------------------|---|
| Production licence                                  | Open area: offshore   onshore | Producing gas field         | <b>Dierste</b>             | <b>License name and operator</b>                              |
| Exploration licence                                 | Storage licence               | Undeveloped gas field       | <b>NAM</b>                 | <b>License part of block and operator</b>                     |
| Exploration licence, application production licence | Application storage licence   | Out of production gas field | <b>WIN</b>                 | <b>License part of block operator splitted '3rd/4th' step</b> |
| Application production licence                      |                               | Producing oil field         | <b>ONE</b>                 | <b>Production platform</b>                                    |
| Application exploration licence                     |                               | Undeveloped oil field       | Drilling location          | <b>AKZ</b> Akzo Nobel Salt B.V.                               |
| Production and exploration licence                  |                               | Out of production oil field | New gas discoveries (2014) | <b>ADR</b> Andromeda B.V.                                     |
|   |                               | Underground gas storage     | Dry hole (2014)            | <b>CEN</b> Centrica Production Nederland B.V.                 |
|   |                               | Gas pipeline                | Oil (2014)                 | <b>CHD</b> ConocoPhillips Nederland B.V.                      |
|   |                               | Oil pipeline                |                            | <b>DAN</b> Dana Petroleum Nederland B.V.                      |
|   |                               |                             |                            | <b>DOD</b> Dutch Gas Development B.V.                         |
|   |                               |                             |                            | <b>DVE</b> Van Dijke Energy Company                           |
|   |                               |                             |                            | <b>GDF</b> GDF Suez E&P Nederland B.V.                        |
|   |                               |                             |                            | <b>NV</b> Nederlandse Gasunie                                 |
|   |                               |                             |                            | <b>HAN</b> Hanusa Hydrocarbons Ltd                            |
|   |                               |                             |                            | <b>HEX</b> Hexagon Energy B.V.                                |
|   |                               |                             |                            | <b>NAM</b> Nederlandse Aardolie Maatschappij B.V.             |
|   |                               |                             |                            | <b>ONE</b> Orange-Nassau Energie B.V.                         |
|   |                               |                             |                            | <b>PTG</b> Petrusgas E&P Nederland B.V.                       |
|   |                               |                             |                            | <b>STR</b> Sterling Resources Nederland B.V.                  |
|   |                               |                             |                            | <b>TAD</b> Taga Offshore / Onshore B.V.                       |
|   |                               |                             |                            | <b>TLP</b> Tulp Oil Netherlands B.V.                          |
|   |                               |                             |                            | <b>TOT</b> Total E&P Nederland B.V.                           |
|   |                               |                             |                            | <b>VER</b> Verrijzen Oil & Gas Netherlands B.V.               |
|   |                               |                             |                            | <b>WIN</b> Wintershall Noordzee B.V.                          |

Geodetic system: ED 50  
 Projection system: UTM  
 Central Meridian: 3° E  
 Scale 1:500 000  
 © TNO Geological Survey of the Netherlands  
 2015 2nd edition