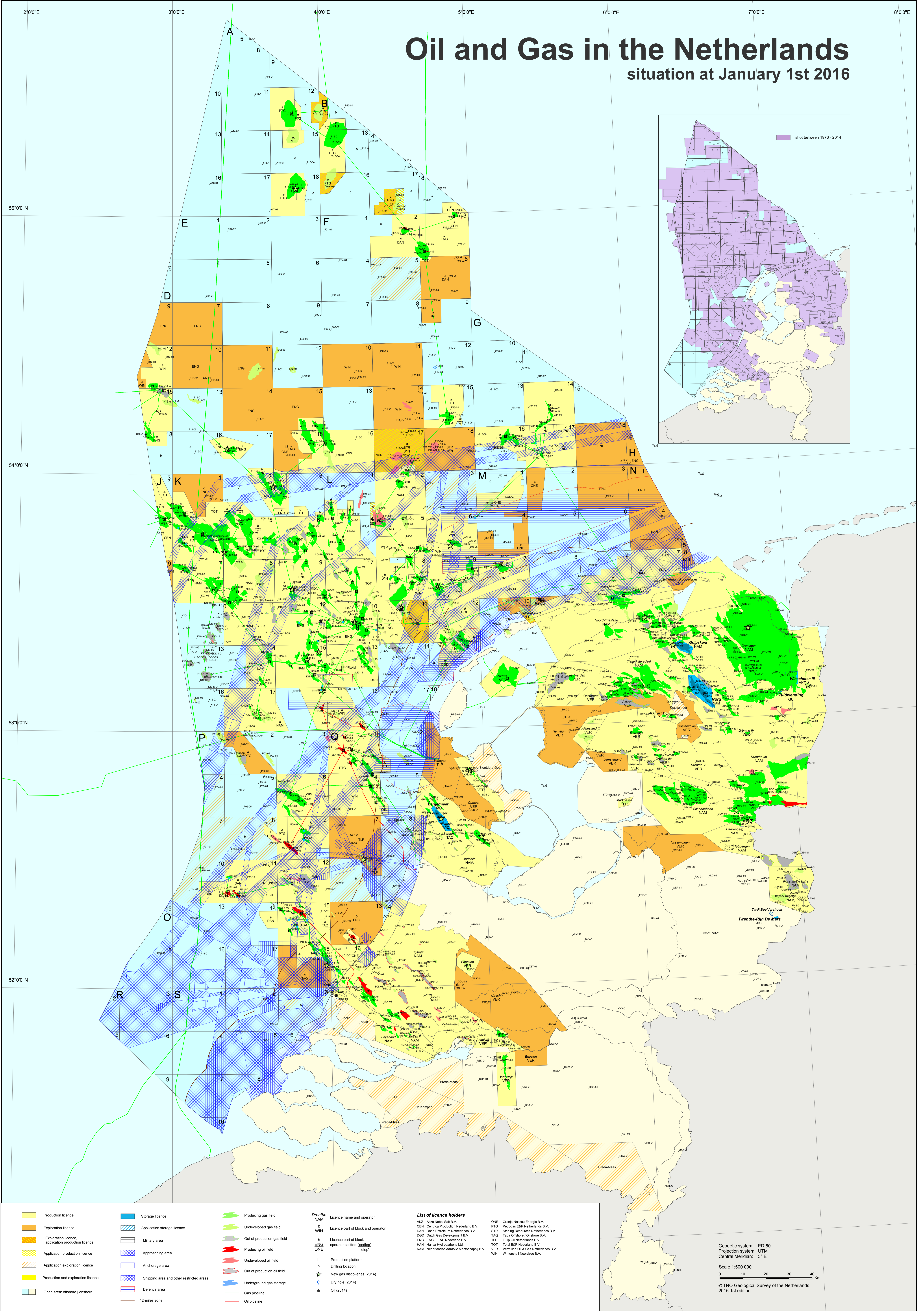


Oil and Gas in the Netherlands

situation at January 1st 2016



- Production licence
- Exploration licence
- Exploration licence, application production licence
- Application production licence
- Application exploration licence
- Production and exploration licence
- Open area: offshore | onshore

- Storage licence
- Application storage licence
- Military area
- Approaching area
- Anchorage area
- Shipping area and other restricted areas
- Defence area
- 12-miles zone

- Producing gas field
- Undeveloped gas field
- Out of production gas field
- Producing oil field
- Undeveloped oil field
- Out of production oil field
- Underground gas storage
- Gas pipeline
- Oil pipeline

- Dronthe NAM** Licence name and operator
- WIN** Licence part of block and operator
- ENG** Licence part of block operator splitted 'onshore'
- ONE** Licence part of block operator splitted 'offshore'
- Production platform
- Drilling location
- New gas discoveries (2014)
- Dry hole (2014)
- Oil (2014)

- List of licence holders**
- | | | | |
|-----|--|-----|--------------------------------------|
| ANZ | Abco Noord O&G B.V. | ONE | Orange-Nieuwou Energie B.V. |
| CEN | Centrica Production Nederland B.V. | PTG | Petrogas E&P Netherlands B.V. |
| DAN | Dana Petroleum Netherlands B.V. | STR | Sterling Resources Netherlands B.V. |
| GDZ | Daan Gas Development B.V. | TAG | Tata Oil Services Onshore B.V. |
| ENG | ENGIE E&P Nederland B.V. | TLP | Tulip Oil Netherlands B.V. |
| HAN | Hansa Hydrocarbons Ltd. | TOT | Total E&P Nederland B.V. |
| NAM | Nederlandse Aardolie-Maatschappij B.V. | VER | Vermilion Oil & Gas Netherlands B.V. |
| | | WIN | Wintershall Noordzee B.V. |

Geodetic system: ED 50
 Projection system: UTM
 Central Meridian: 3° E
 Scale 1:500 000
 0 10 20 30 40 Km
 © TNO Geological Survey of the Netherlands
 2016 1st edition