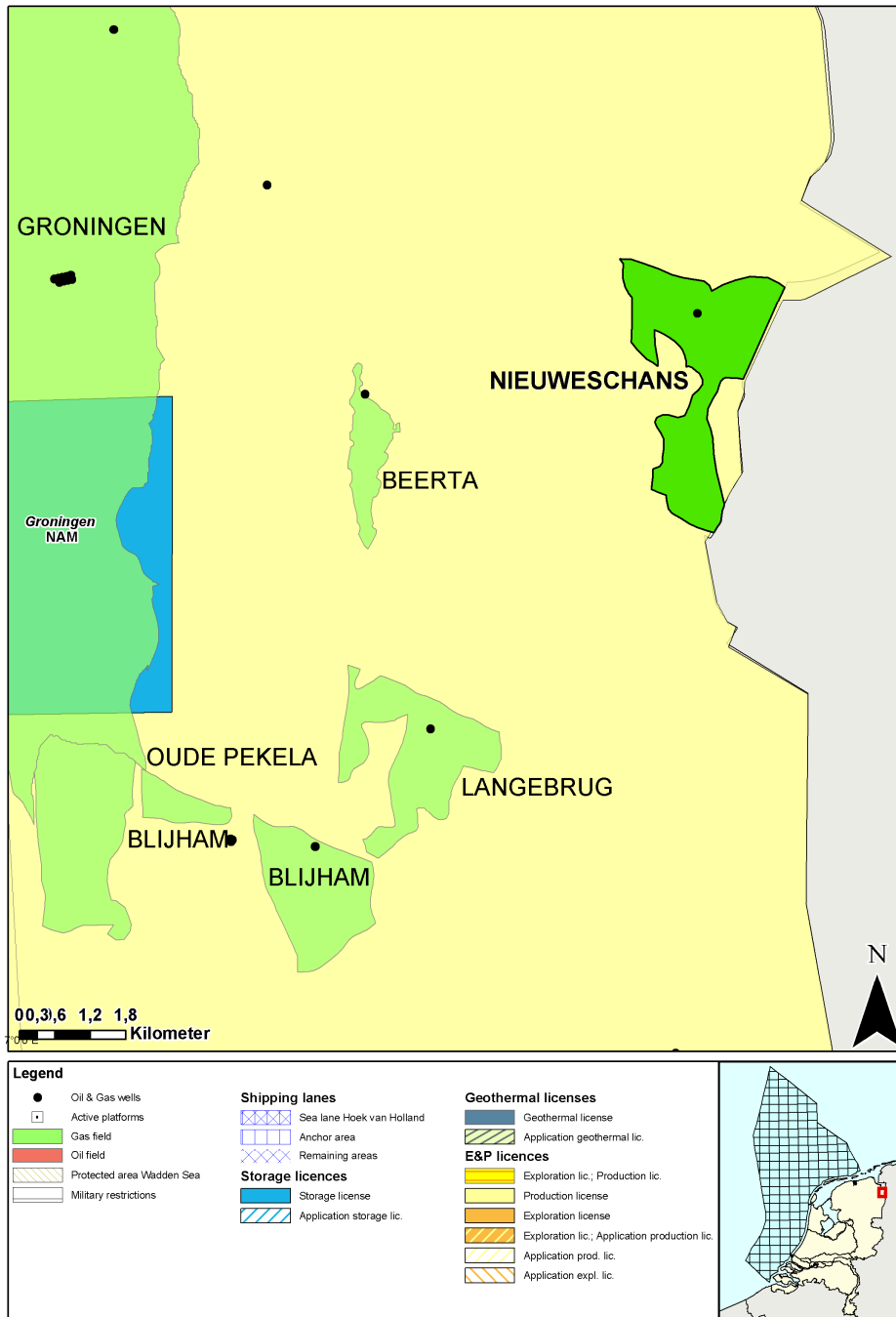




Fact sheet Nieuweschans

Stranded fields - Q4 2009



General information

The Nieuweschans gas field was discovered in 1994 by NAM by well Nieuweschans-01. The field is situated in Groningen concession very near the German border. The field contains gas in the Upper Slochteren sandstone reservoir. Core analysis is performed and production tests have been carried out by NAM.

For general information on the geology of the Nieuweschans area reference is made to the Geological atlas of the Netherlands, map sheet III Rottumeroog-Groningen (including geological data on porosity and permeability distribution of the Slochteren sandstone).

Sequence of events

Date	Event
04-04-1963	Production license Groningen effective (NAM)
24-11-1993	Spud date Nieuweschans-01
11-12-1993	TD reached Hole 1 (2287 m ah)
08-02-1994	RFT 3844.5-3892.5 m ah
17-02-1994	RFT 3853.3-4055.0 m ah
27-02-1994	TD reached Hole 2 (4372 m ah)
22/4-2/5-1994	Production test 1 3907.0-3851.5 m ah
12-03-1994	Well suspended

Reservoir data

Geological unit RGD & NOGEPA (1993)	Top m ah	Base m ah	Net m ah	N/G %	Porosity % ¹	Permeab. hor. mD ¹
Slochteren Sandstone ROSL	3842.0	3936.0	83.0	69.3	14.0	0.1-0.3
Limburg DC	3936.0	4372.0				

¹from core data

Hydrocarbon specifications

Reservoir	CH ₄ %	CO ₂ %	N ₂ %	H ₂ S %	GHV MJ/m ³
Upper Slochteren Sandstone	90.8	1.4	5.7	0.0	37.8

Contacts

Type	GWC tvd ss
ROSL gas field	3874.0

Volumes

Reservoir	GIIP 10 ⁹ m ³	Reserves 10 ⁹ m ³		
		Proven	Expected	Possible
Upper Slochteren Sandstone	0.5-1.0		0-0.5	

Productivity

Test depth	Reservoir pressure in bar abs	Q well production at s.c. m ³ /d	Drawdown bar	Q50 calculated m ³ /d per 50 bar drawdown	WGR m ³ / 10 ⁶ m ³
Slochteren Formation 3852-3907 m-RT	437	1700	394.4	1200	137

Q50 based on available public data from composite log

Well status

NSS-01, Completion & Closed-in

Infrastructure

The nearest production facility is located approximately three kilometers to the northeast.

Public References

Rijks Geologische Dienst 1991, Geological Atlas of the Deep subsurface of the Netherlands. Mapsheet III Rottumeroog-Groningen

RGD & NOGEPa 1993, Stratigraphic nomenclature of the Netherlands, Mededelingen Rijks Geologische Dienst, Nr. 50

NAM 1994: Composite well log, [NSS-01-s1](#). *On open file*

For more information stranded Oil&Gas fields in the Netherlands:

<http://www.nlog.nl/nl/reserves/reserves/stranded.html>

For released Well data and Seismic data contact DINOloket:

<http://www.dinoloket.nl>

For geological maps of the deep subsurface of the Netherlands:

http://www.nlog.nl/nl/pubs/maps/geologic_maps/NCP1.html

Liability

Facts and figures supplied on this fact sheet have been compiled carefully. Great care has been taken to ensure correct coverage of all information. TNO and the Ministry of Economic Affairs do not accept any liability for any direct or indirect damage of any kind ensuing from the use of information published on this sheet.