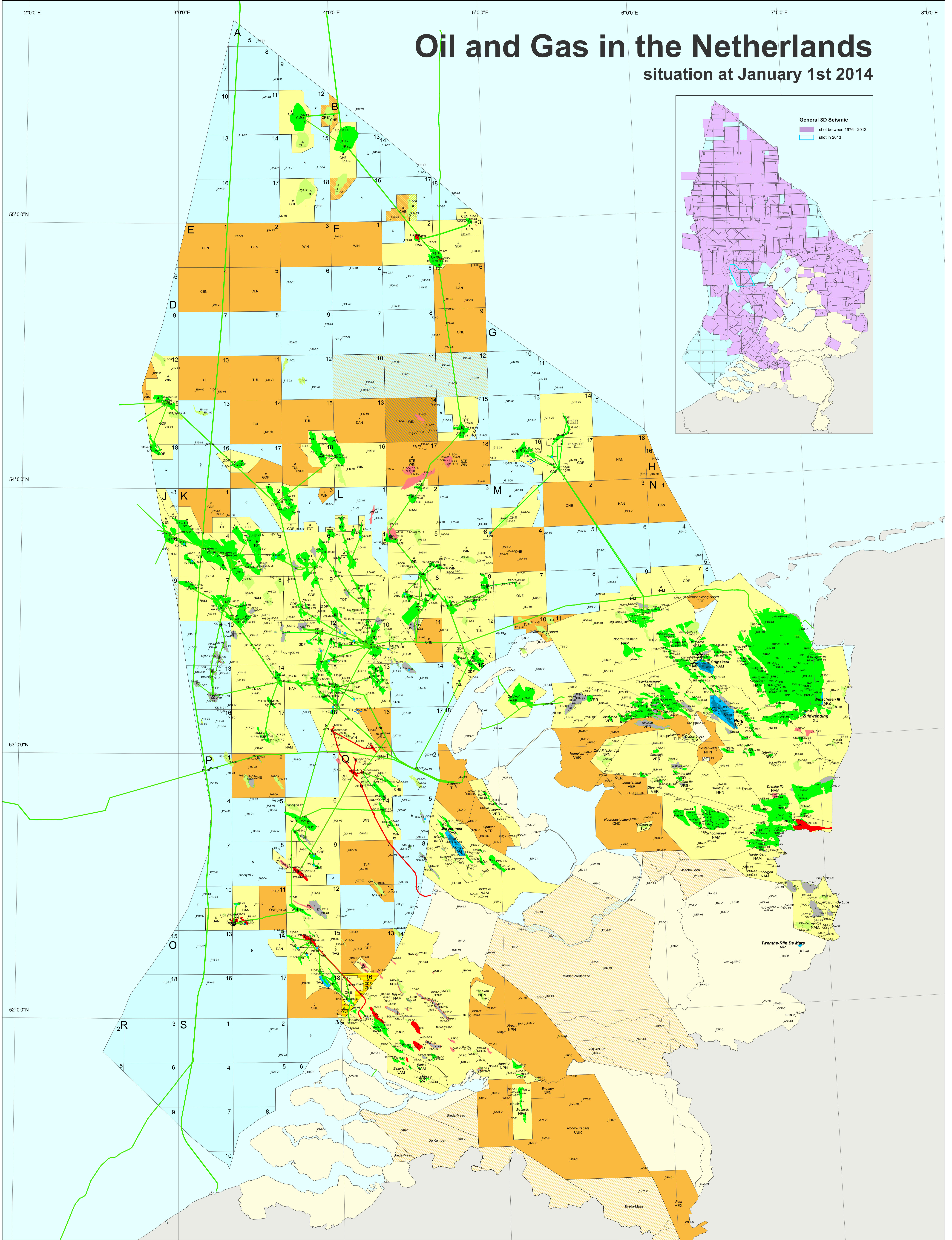
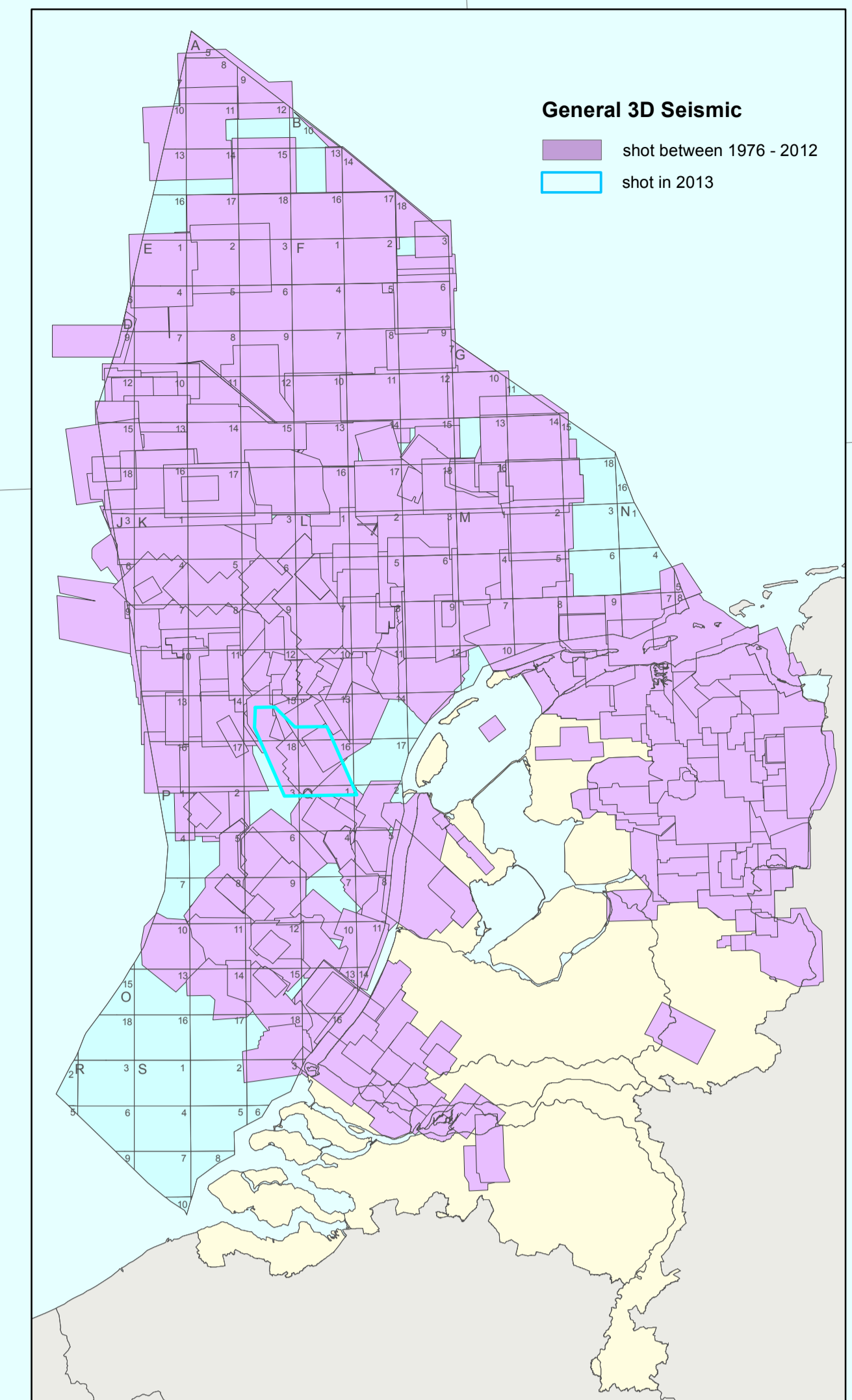


Oil and Gas in the Netherlands

situation at January 1st 2014



- | | | | | |
|---|-------------------------------|-----------------------------|----------------|---|
| Production licence | Open area: offshore onshore | Producing gas field | Drenthe | Licence name and operator |
| Exploration licence | Storage licence | Undeveloped gas field | NAM | Licence part of block and operator |
| Application production licence | Application storage licence | Out of production gas field | WIN | Licence part of block operator splitted 'topdip' / 'step' |
| Application production licence | | Producing oil field | GDF | Production platform |
| Application exploration licence | | Undeveloped oil field | ONE | Drilling location |
| Production and exploration licence | | Out of production oil field | | Cluster |
| Exploration licence ('step'), application exploration licence ('vondiep') | | Underground storage | | Gas pipeline |
| | | Gas pipeline | | Oil pipeline |

- List of licence holders**
- | | | | |
|-----|--|-----|--|
| AKZ | Akzo Nobel Salt B.V. | HAN | Hansa Hydrocarbons Ltd |
| ASC | Arcelor Resources Netherlands B.V. | HEX | Reaumur Energy B.V. |
| ATP | ATP Oil and Gas Netherlands B.V. | NAM | Nederlandse Aardolie Maatschappij B.V. |
| CBR | Cauberg Brouwer B.V. | NPN | Northern Petroleum Nederland B.V. |
| CEN | Centrica Production Nederland B.V. | ONP | Orange-Nassau Energie B.V. |
| CHD | Chromite Hartenberg B.V. | STR | Starting Resources Netherlands B.V. |
| CHE | Chemon Exploration and Production Netherlands B.V. | TAD | Tata Oilroyal Onshore B.V. |
| DAN | Dana Petroleum Netherlands B.V. | TLP | Tulip Oil Netherlands B.V. |
| DYN | Van Dyke Energy Company | TOT | Total E&P Nederland B.V. |
| GDF | GDF Suez E&P Nederland B.V. | TUL | Tulco Netherlands B.V. |
| GU | N.V. Nederlandse Gasunie | VER | Vormion Oil & Gas Netherlands B.V. |
| | | WIN | Wintershall Horrocks B.V. |

Geodetic system ED 50
Projection system UTM
Central Meridian 3° E
Scale 1:500 000
0 6.5 17 25.5 34 Km
© TNO Geological Survey of the Netherlands
2014 1st edition