

EBN -Scan Amstelland

AMS-01

Recorded LWD Data - Field Copy

Scale 1: 500 MD

1. All depths are calibrated to the driller's pipe tally and are measured from the rotary table.
2. No depth corrections have been made for pipe stretch and compression.
3. All data presented is recorded (memory).
4. The following smoothing parameters have been applied to the data:

Curve/Smoothing	Interval	Coercion Distance	Gap Fill
1:500 & 1:200 Scale			
Rate Of Penetration:	0.1m	0.30m	1.0m
All other curves:	0.1m	0.15m	1.0m
5. Formation exposure time is the time elapsed from when the bit drills a particular depth to when a sensor logs that same depth. Exposure time is presented for the resistivity sensor.
6. 20" Casing shoe @ 78.48m MD (78.48m TVD) is based on the driller's pipe tally.
13 3/8" Casing shoe @ 700.85m (700.85m TVD) is based on the driller's pipe tally.
7. Data was processed using Insite v9.2.0 software.

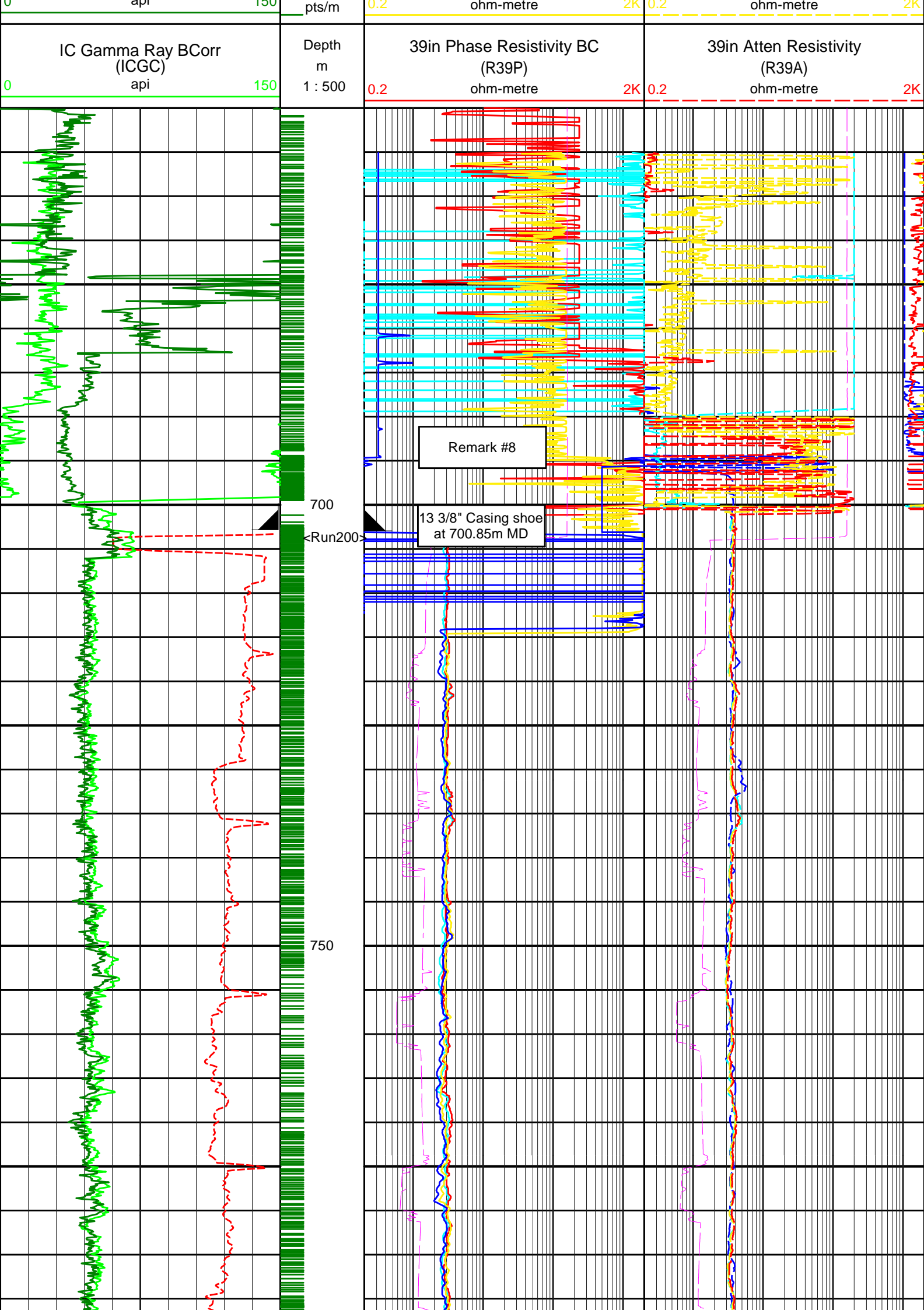
8. Below are the depth ranges for which measurements were made through casing:

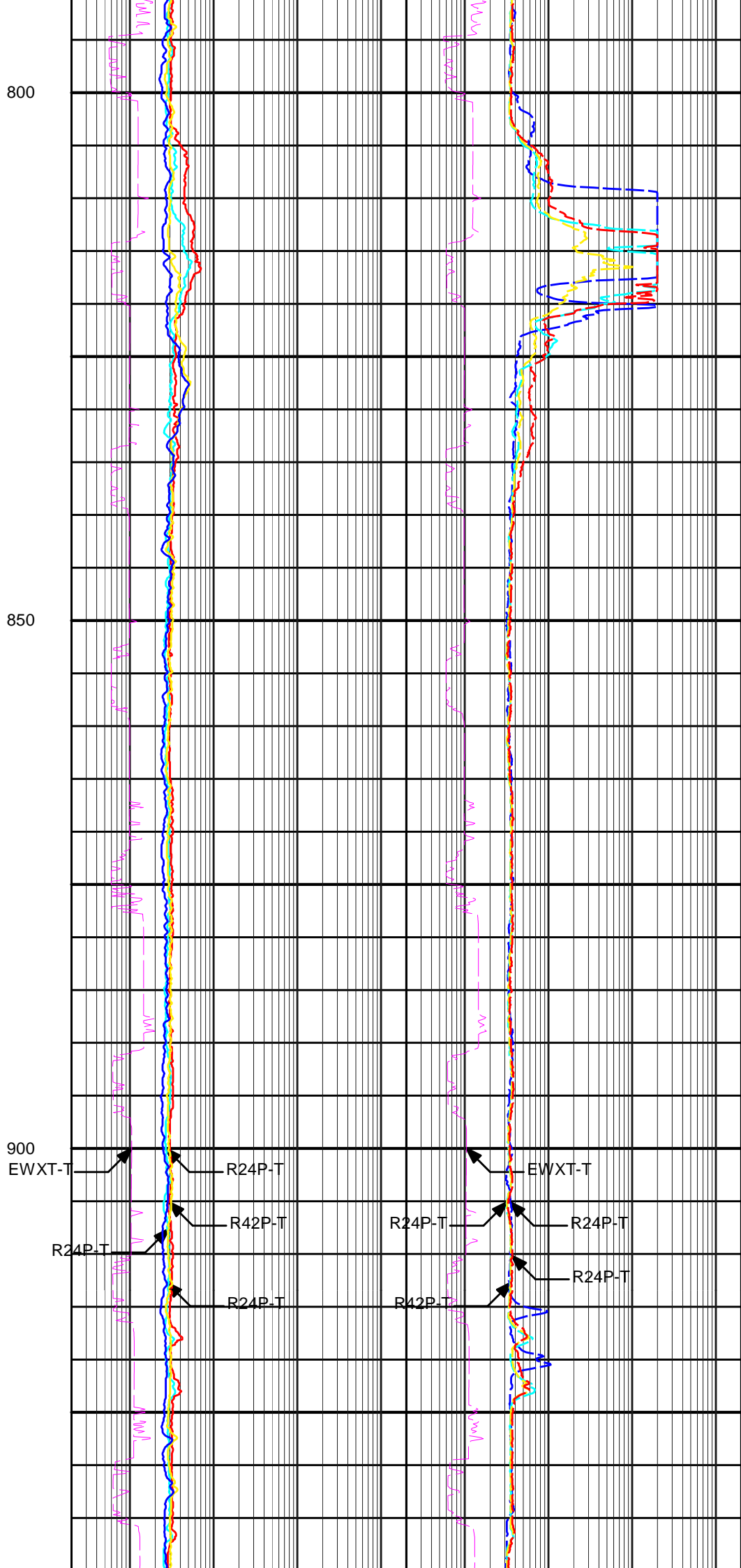
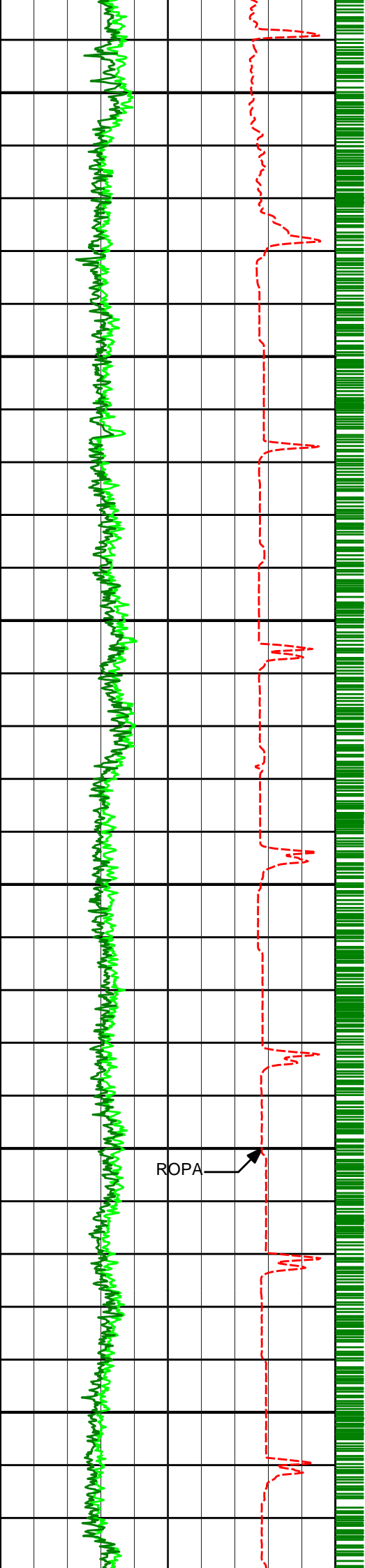
Sensor	From	To
IC-Gamma	660m MD (660m TVD)	689m MD (689m TVD)
EWR-P4	660m MD (660m TVD)	689m MD (689m TVD)

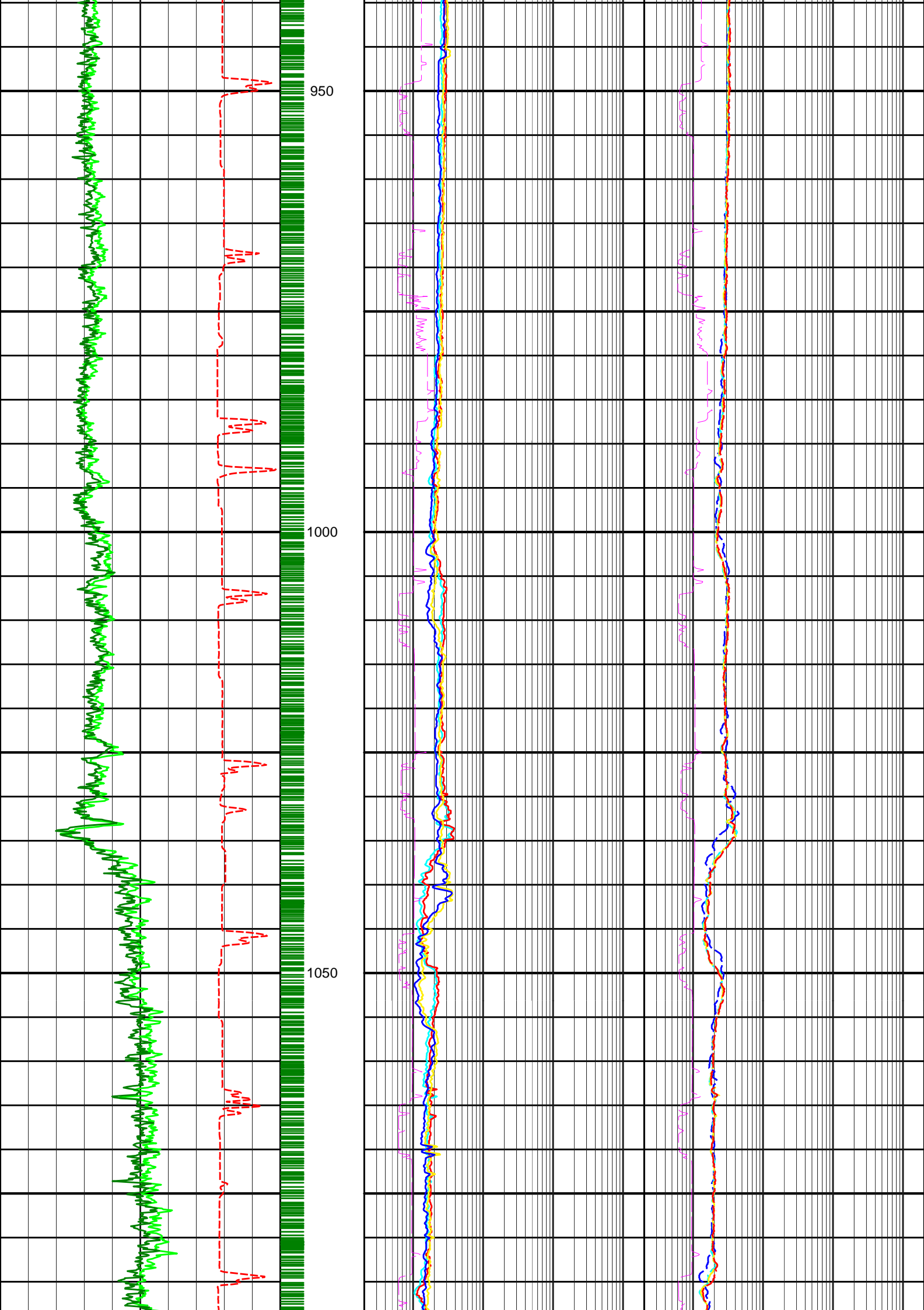
9. Environmental Parameters:

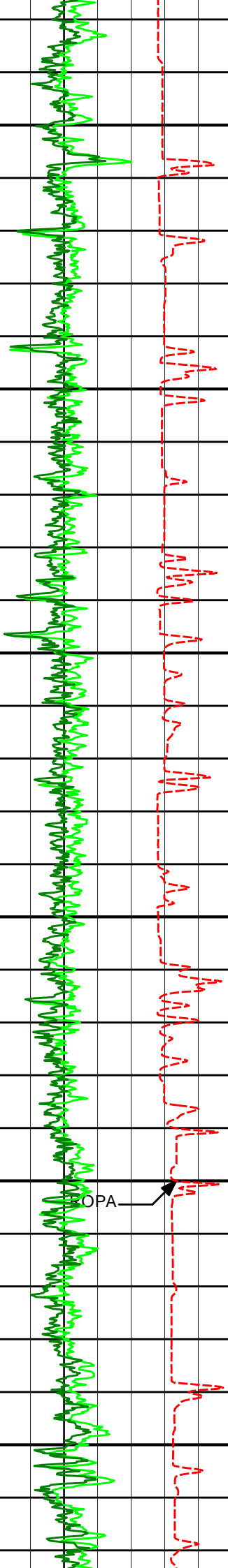
Run 200	PCG-K	EWR
Hole Size (inches)	12.25" (Fixed)	Not Applicable
Mud Type	Oil Based Mud	Oil Based Mud
Mud Density (sg)	1.12-1.25	Not Applicable
KCL Conc (pbw)		Not Applicable
Mud Res @ BH Temp	Not Applicable	

		EWR Formation Exp Time RT (EWXT) hours	EWR Formation Exp Time RT (EWXT) hours
		0.2 2K	0.2 2K
		9in Phase Resistivity BC (R9P) ohm-metre	9in Atten Resistivity (R9A) ohm-metre
		0.2 2K	0.2 2K
Avg Rate of Penetration (ROPA) metre per hr		15in Phase Resistivity BC (R15P) ohm-metre	15in Atten Resistivity (R15A) ohm-metre
100 0		0.2 2K	0.2 2K
PCG Gamma Ray BCorr (PGRC)	Gamma Data Density	27in Phase Resistivity BC (R27P)	27in Atten Resistivity (R27A)
0 150		0.2 2K	0.2 2K









1100

1150

TD

1200

EWXT-T

R24P-T

R24P-T

R42P-T

R24P-T

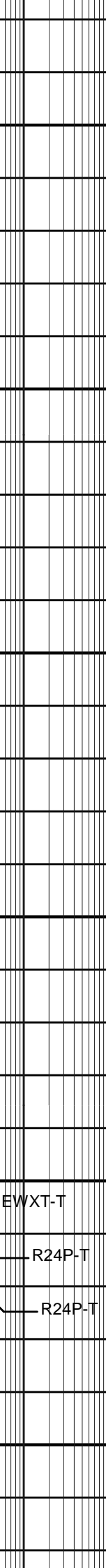
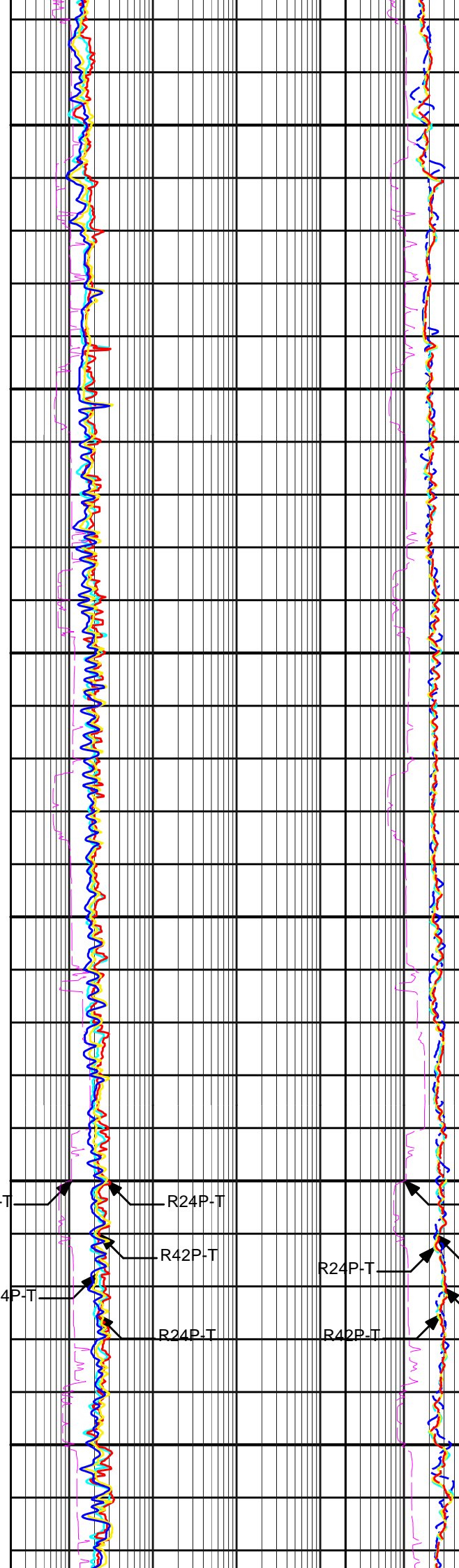
R24P-T

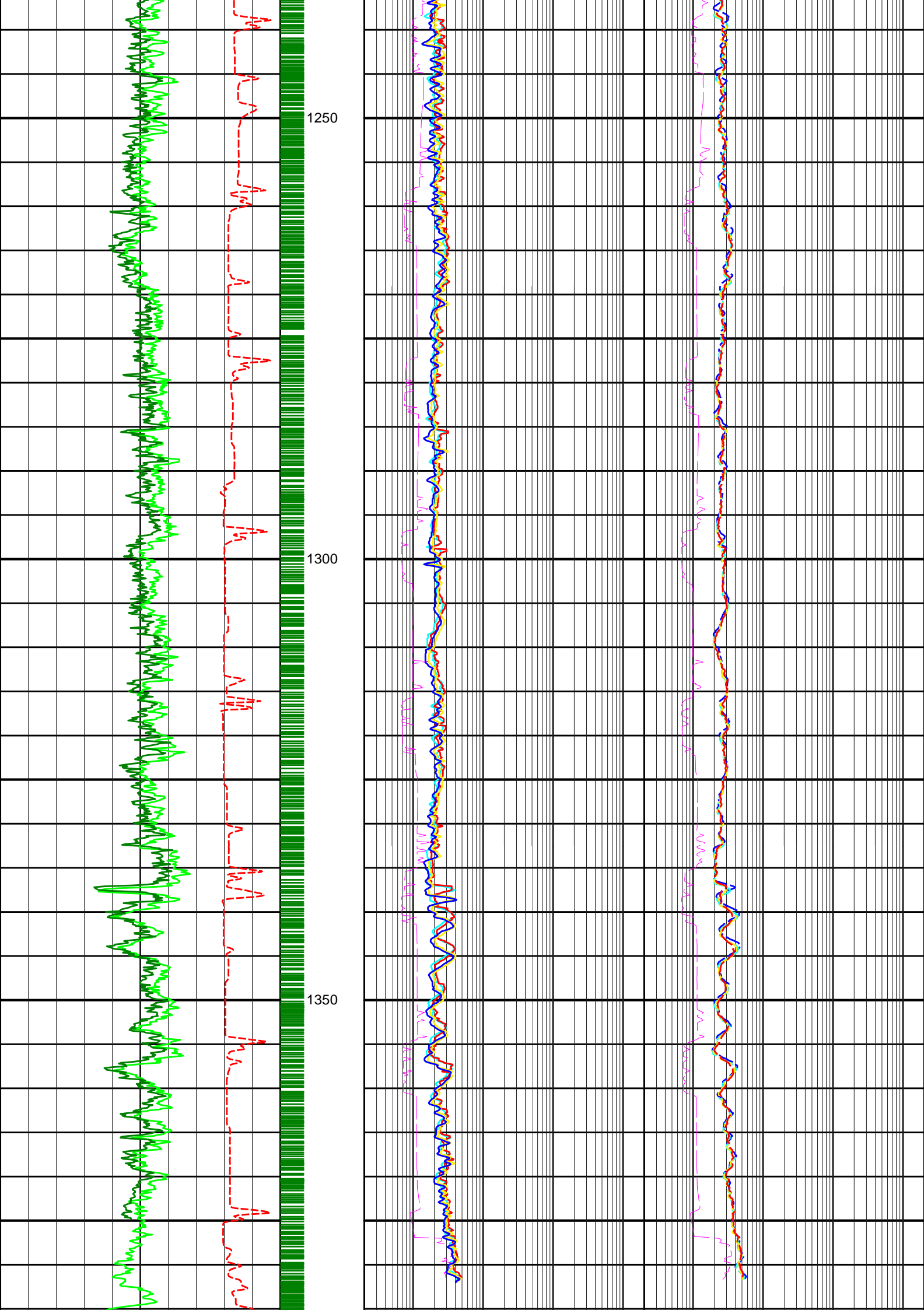
R42P-T

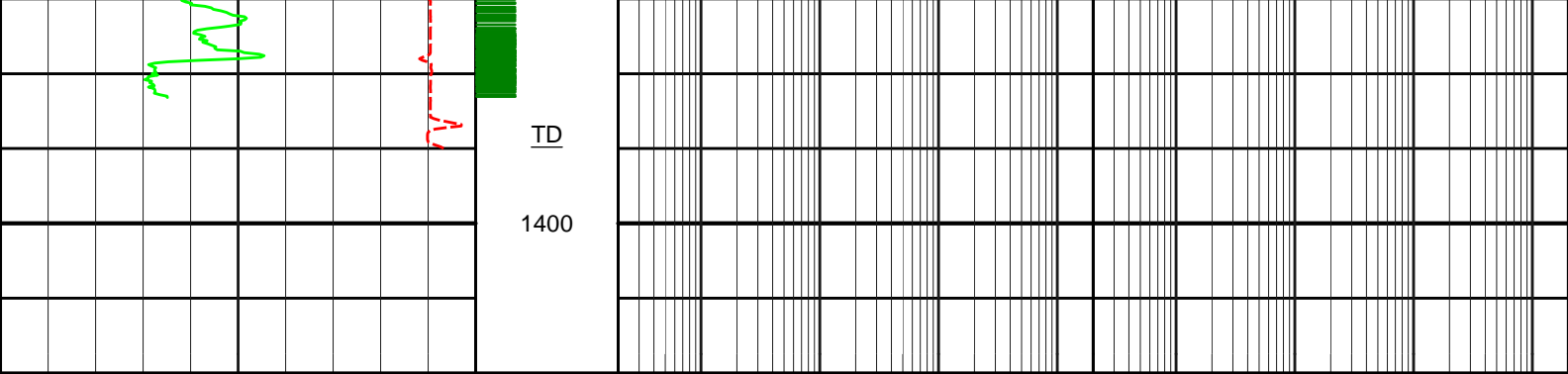
EWXT-T

R24P-T

R24P-T







IC Gamma Ray BCorr (ICGC) api 0 150	Depth m 1 : 500	39in Phase Resistivity BC (R39P) ohm-metre 0.2 2K	39in Atten Resistivity (R39A) ohm-metre 0.2 2K
PCG Gamma Ray BCorr (PGRC) api 0 150	Gamma Data Density pts/m	27in Phase Resistivity BC (R27P) ohm-metre 0.2 2K	27in Atten Resistivity (R27A) ohm-metre 0.2 2K
Avg Rate of Penetration (ROPA) metre per hr 100 0		15in Phase Resistivity BC (R15P) ohm-metre 0.2 2K	15in Atten Resistivity (R15A) ohm-metre 0.2 2K
		9in Phase Resistivity BC (R9P) ohm-metre 0.2 2K	9in Atten Resistivity (R9A) ohm-metre 0.2 2K
		EWR Formation Exp Time RT (EWXT) hours 0.2 2K	EWR Formation Exp Time RT (EWXT) hours 0.2 2K

HALLIBURTON

Sperry Drilling

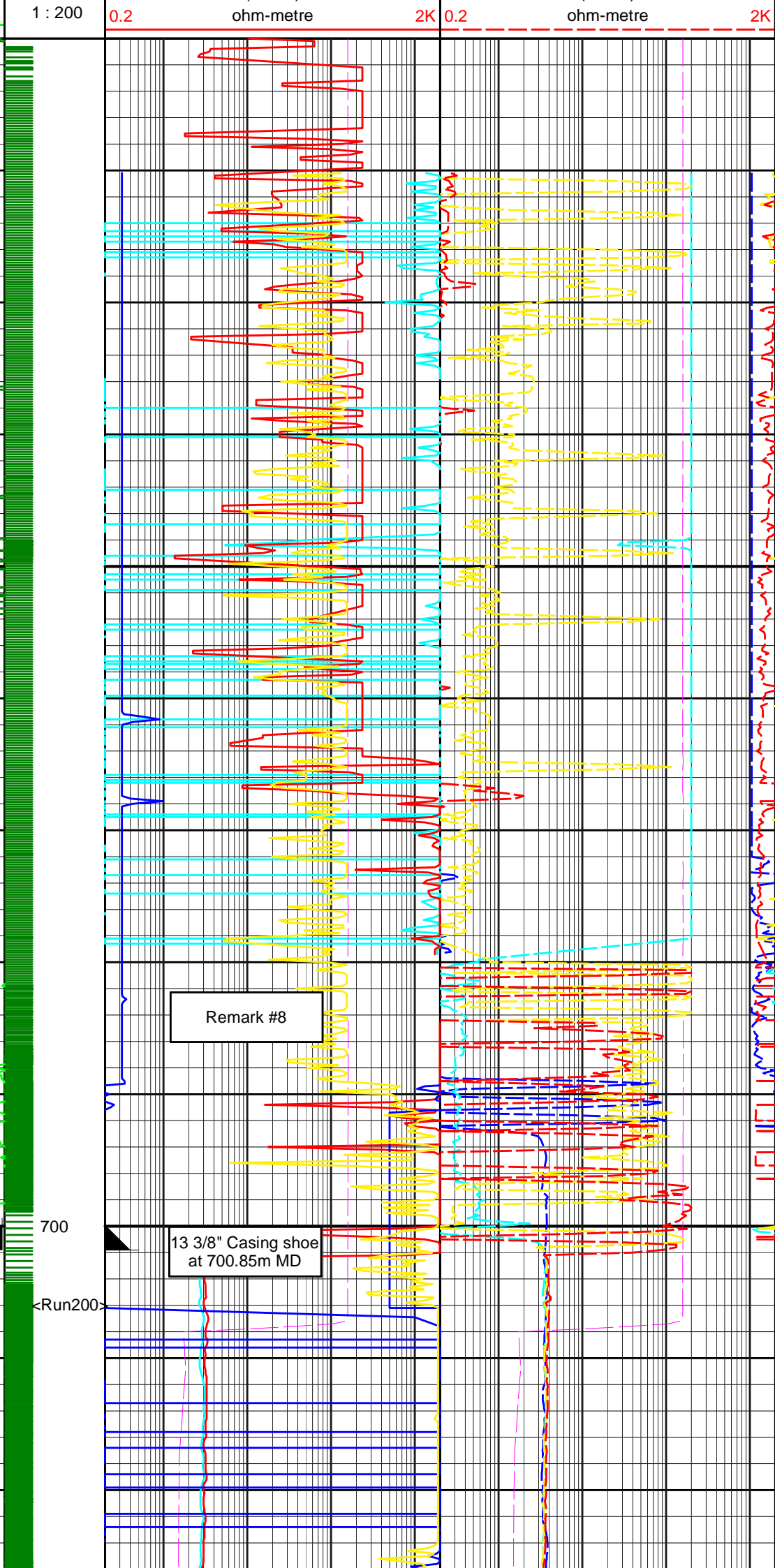
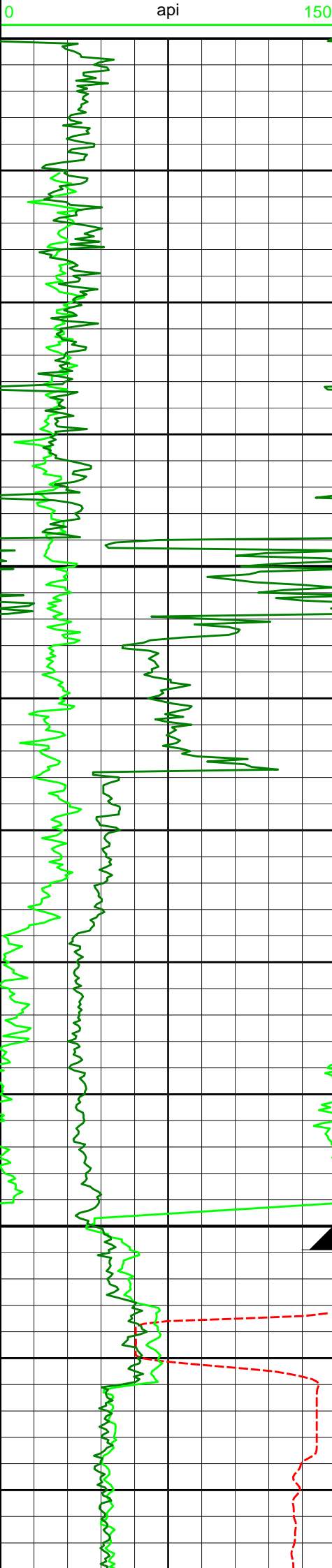
EBN -Scan Amstelland

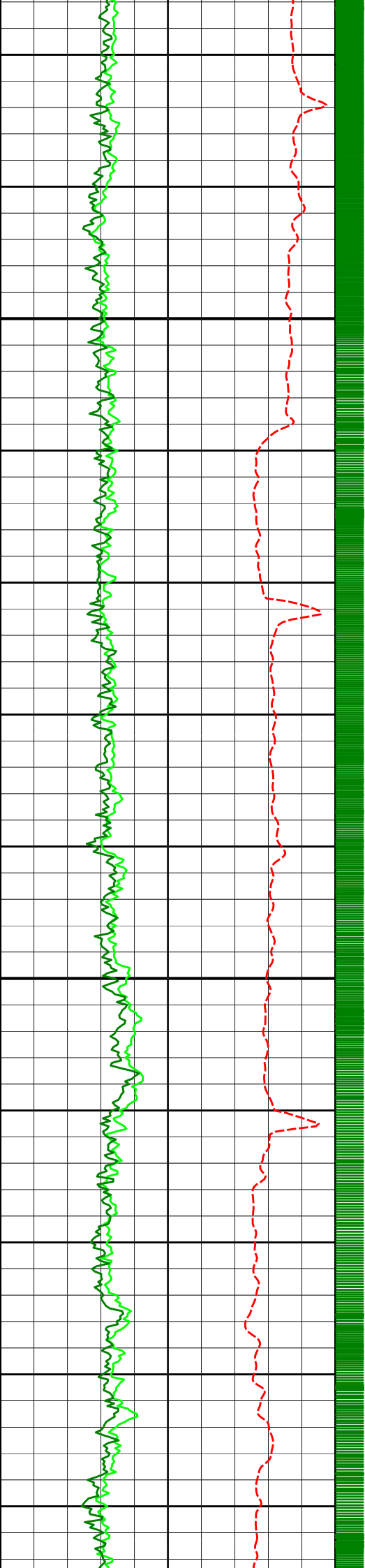
AMS-01

Recorded LWD Data - Field Copy

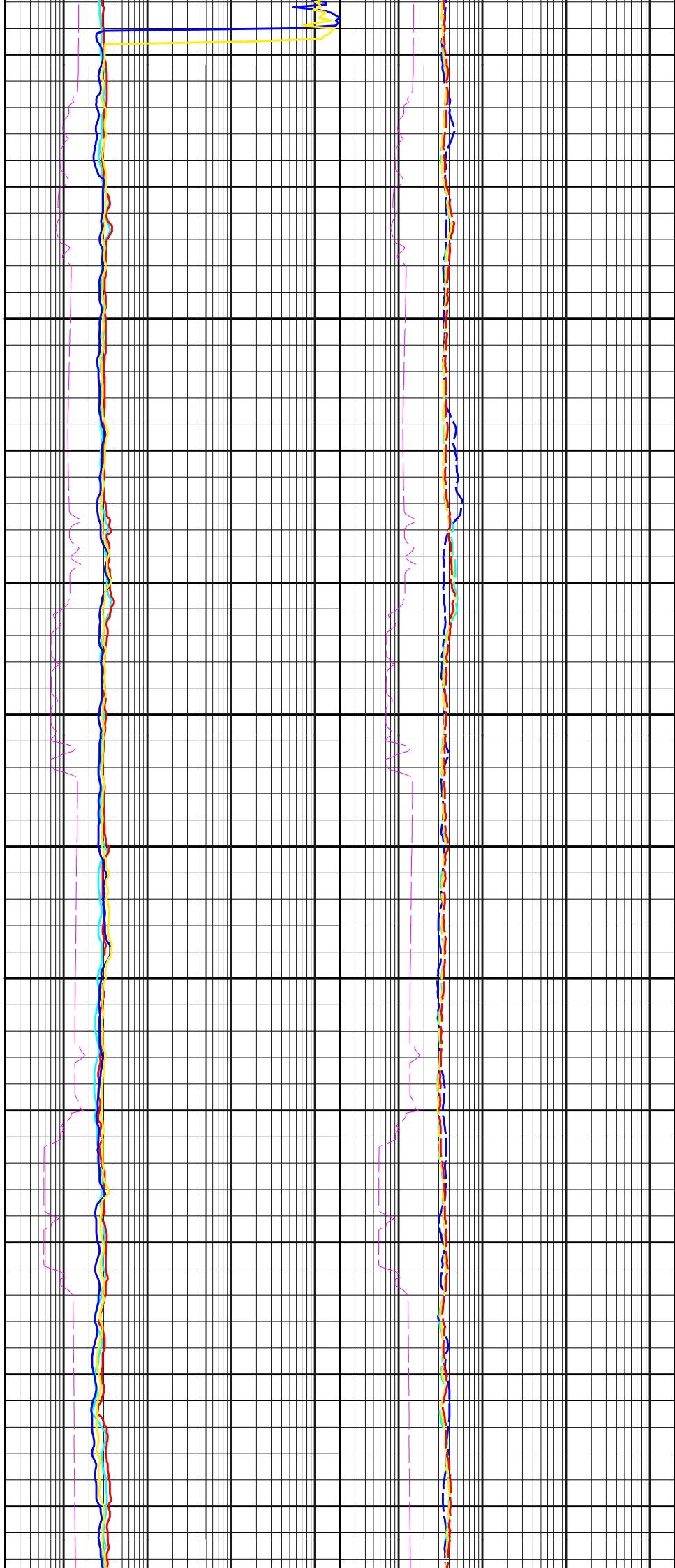
Scale 1: 200 MD

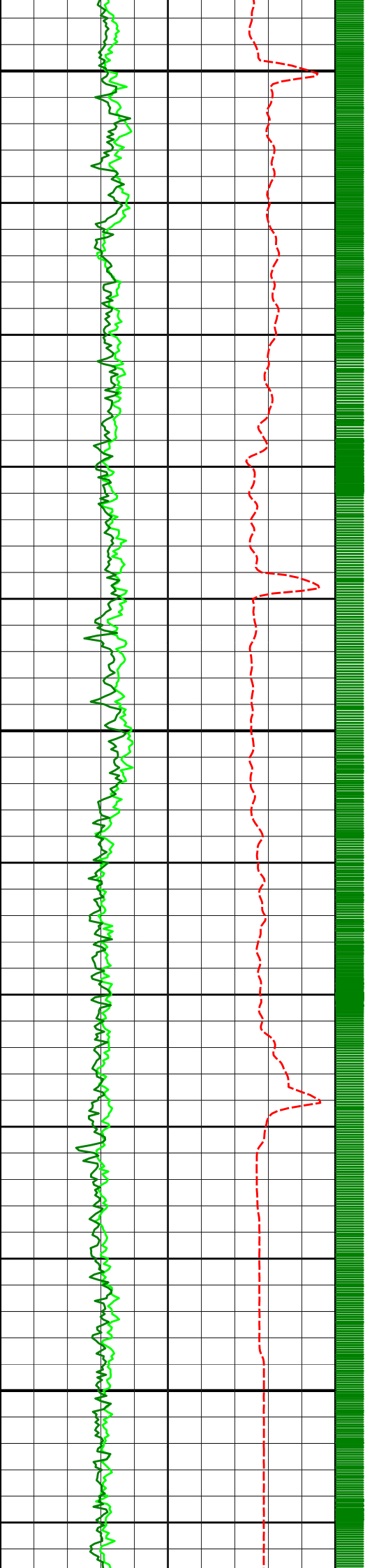
Avg Rate of Penetration (ROPA) metre per hr 100 0		EWR Formation Exp Time RT (EWXT) hours 0.2 2K	EWR Formation Exp Time RT (EWXT) hours 0.2 2K
		9in Phase Resistivity BC (R9P) ohm-metre 0.2 2K	9in Atten Resistivity (R9A) ohm-metre 0.2 2K
		15in Phase Resistivity BC (R15P) ohm-metre 0.2 2K	15in Atten Resistivity (R15A) ohm-metre 0.2 2K
PCG Gamma Ray BCorr (PGRC) api 0 150	Gamma Data Density pts/m	27in Phase Resistivity BC (R27P) ohm-metre 0.2 2K	27in Atten Resistivity (R27A) ohm-metre 0.2 2K
IC Gamma Ray BCorr (ICGC)	Depth m	39in Phase Resistivity BC (R39P)	39in Atten Resistivity (R39A)



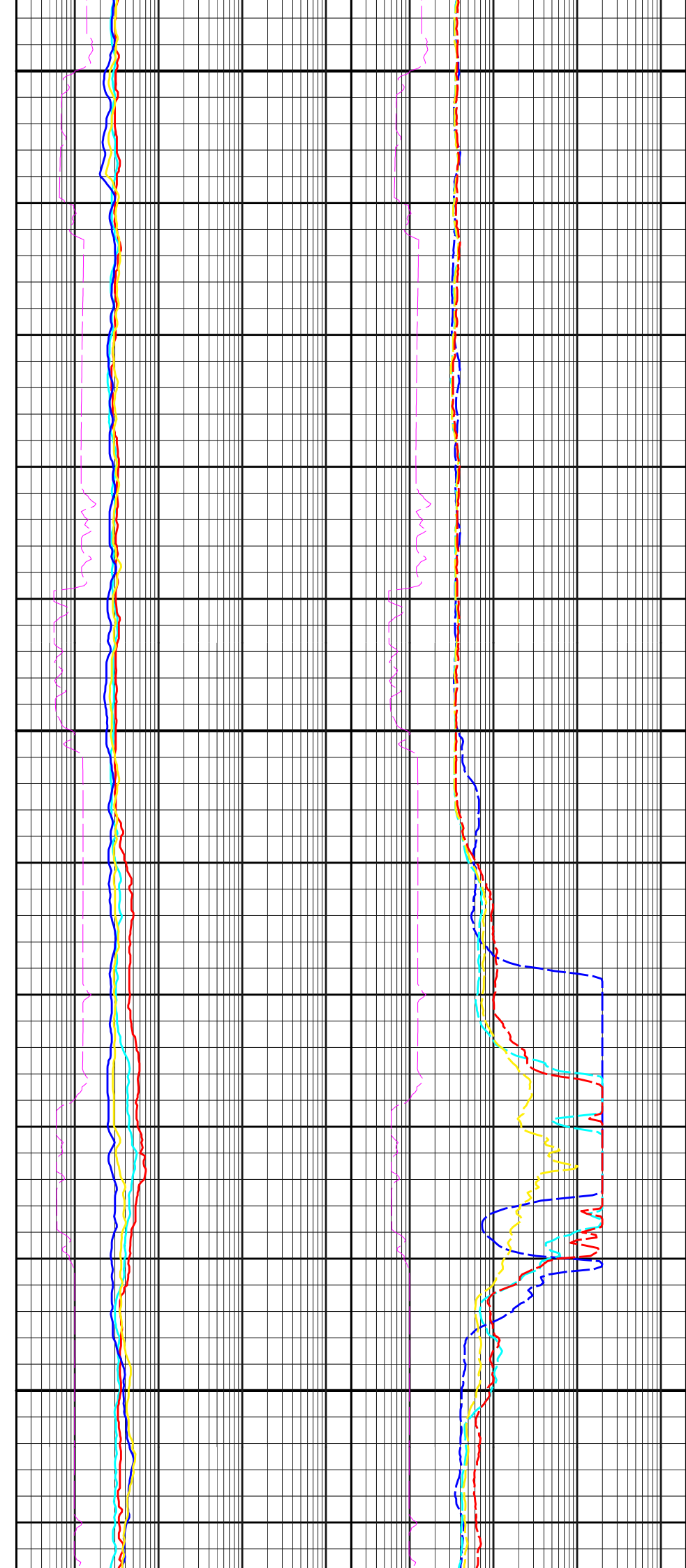


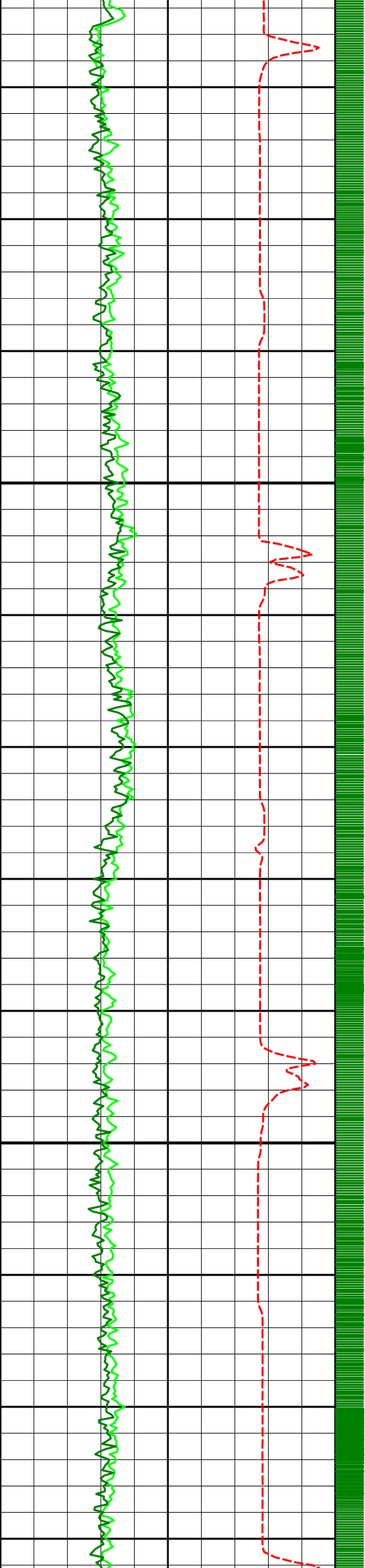
750



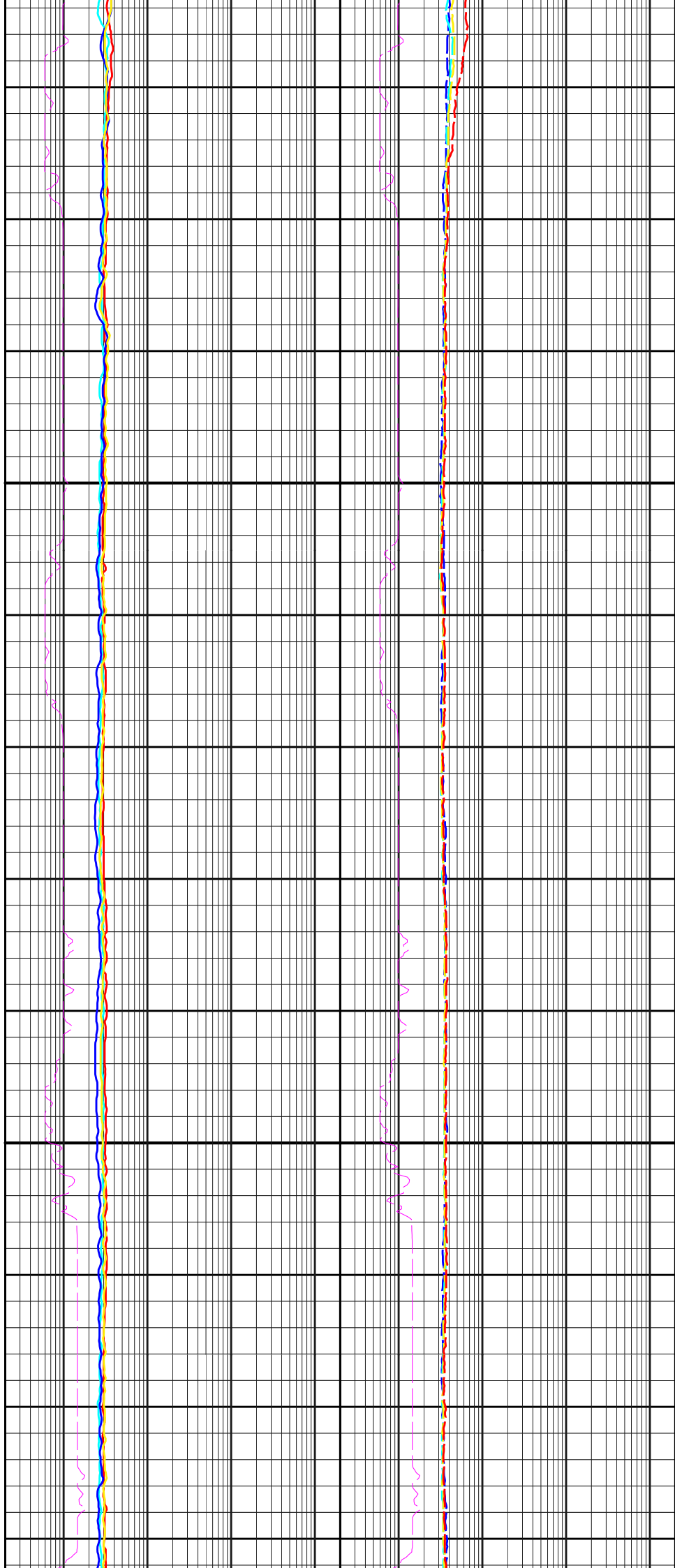


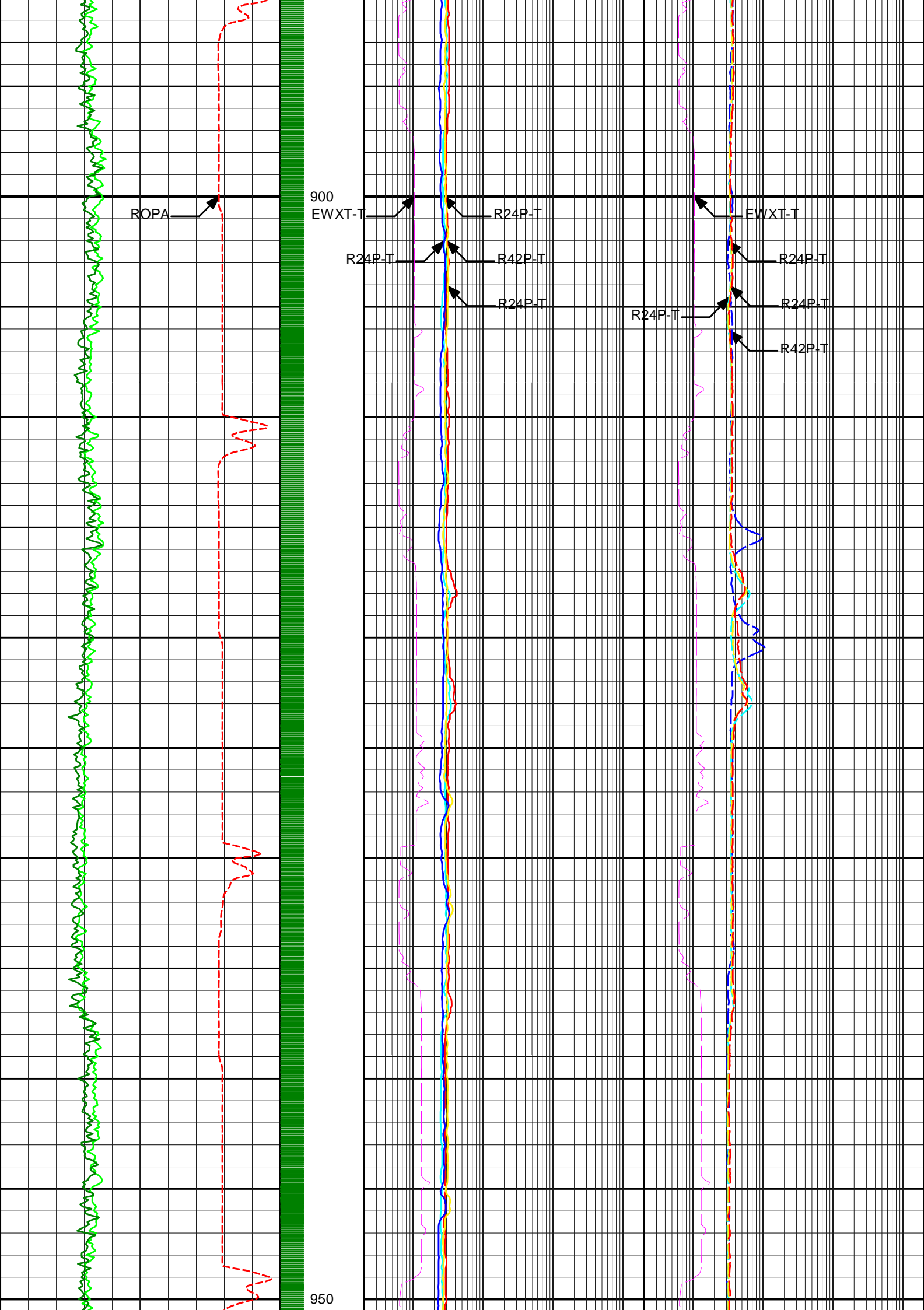
800

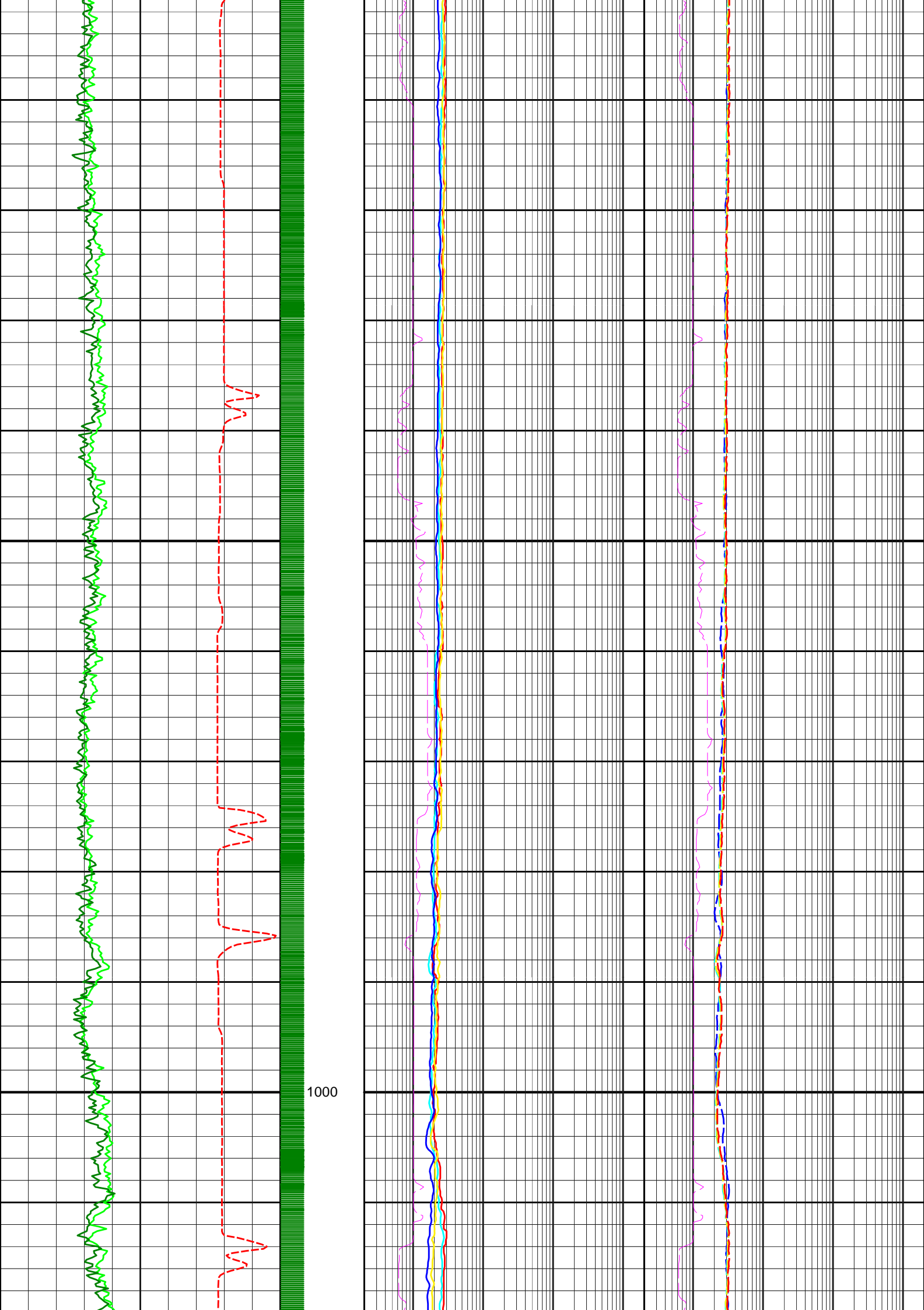


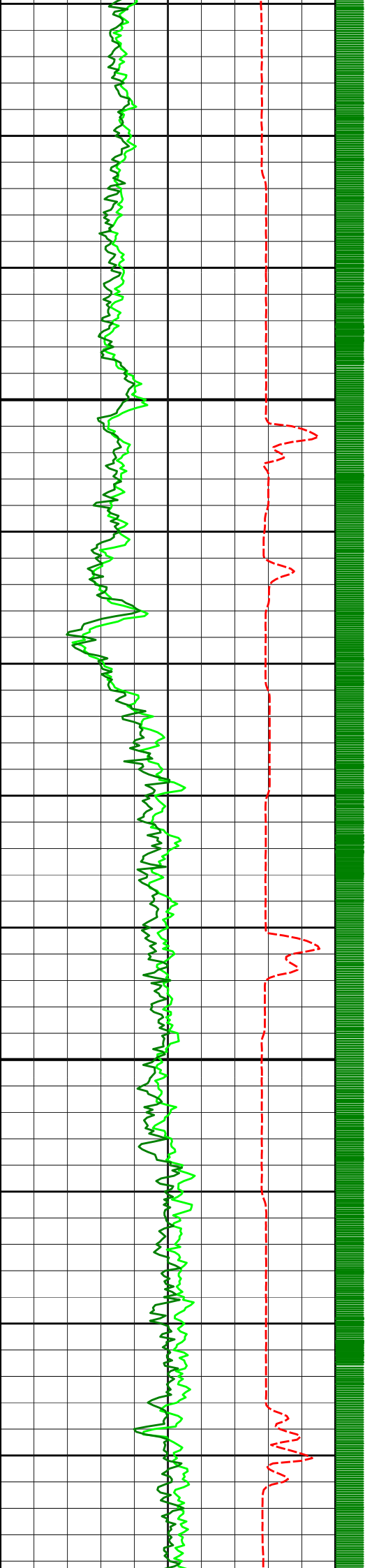


850

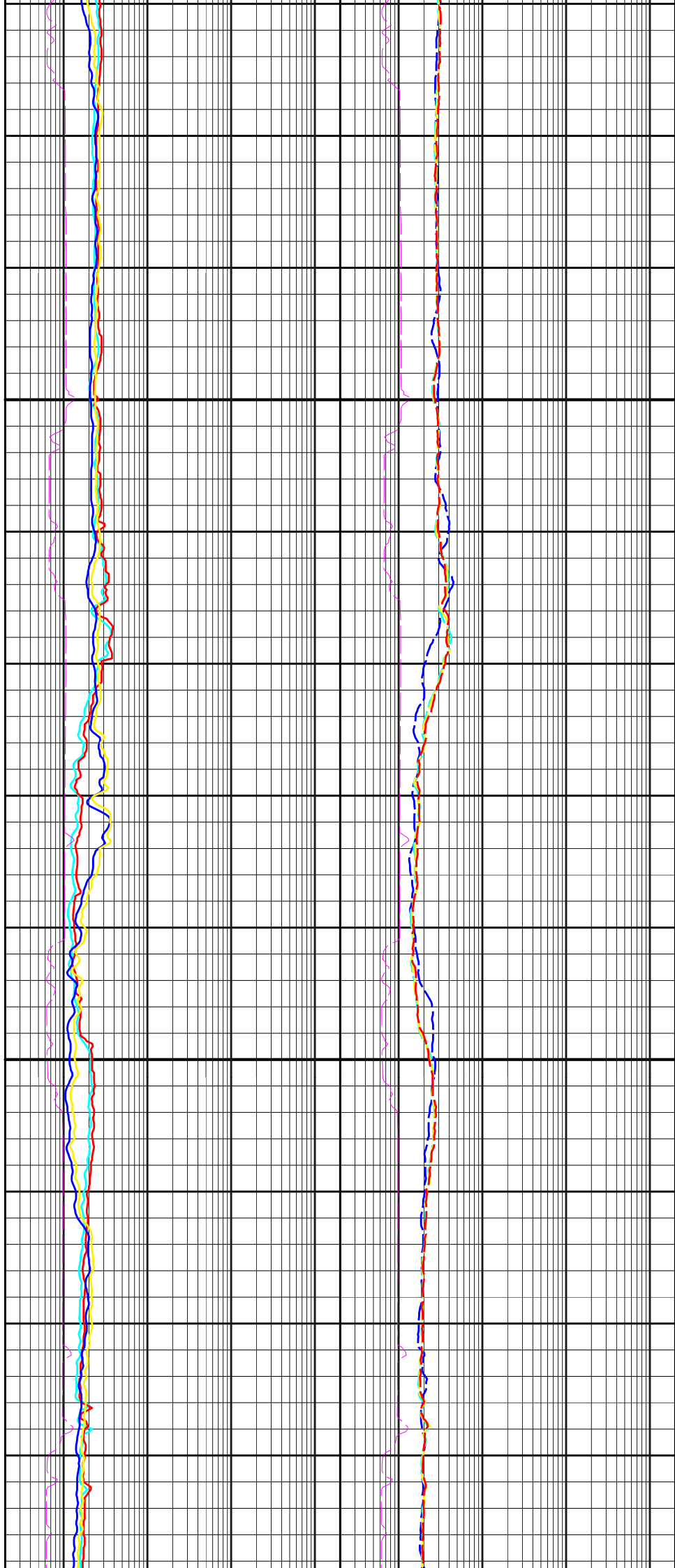


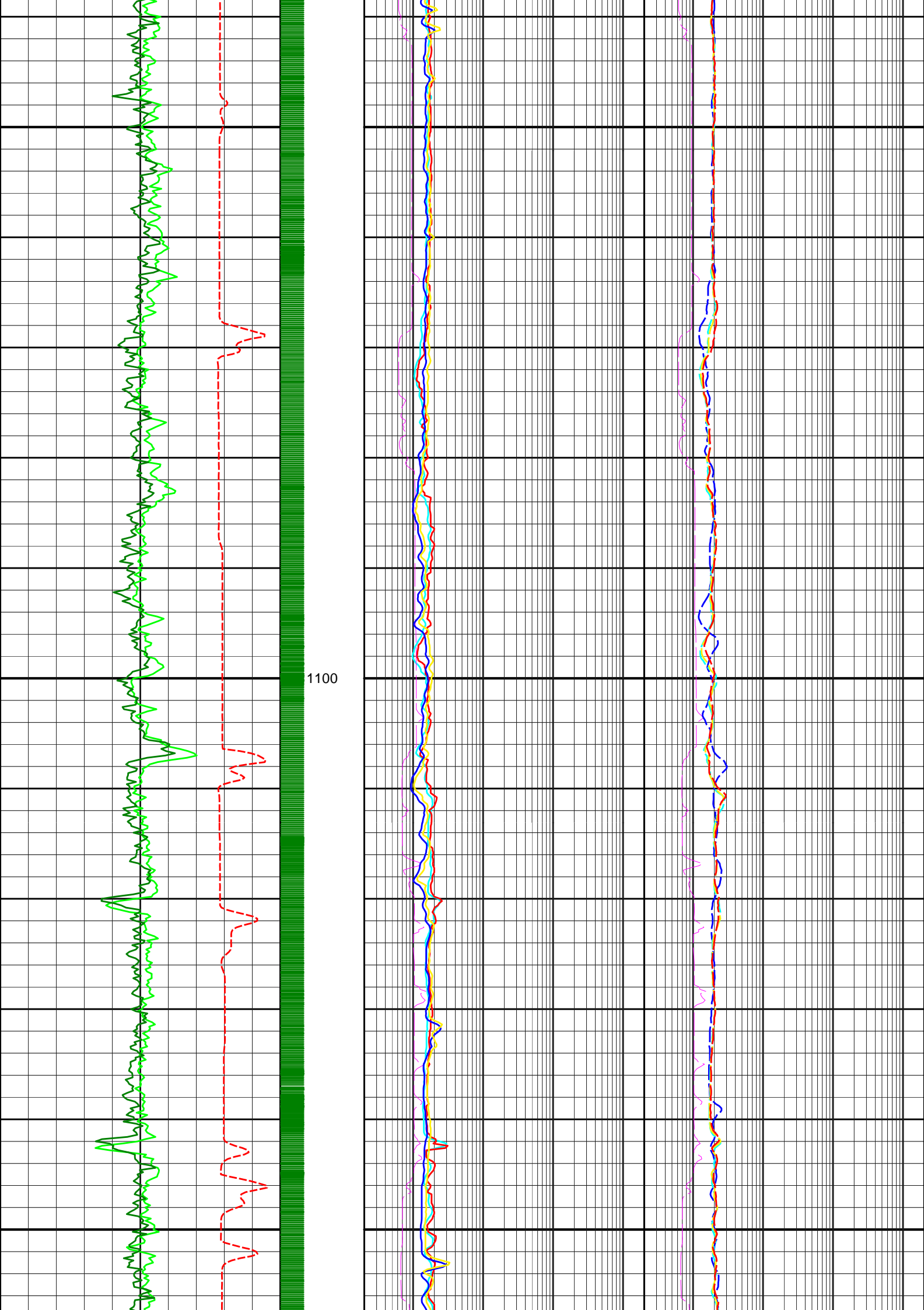


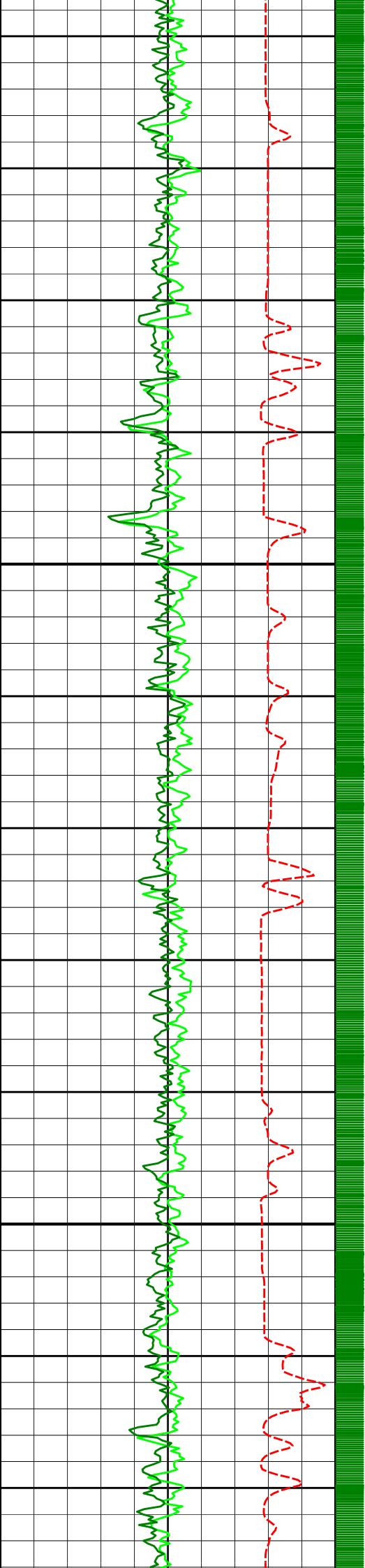




1050

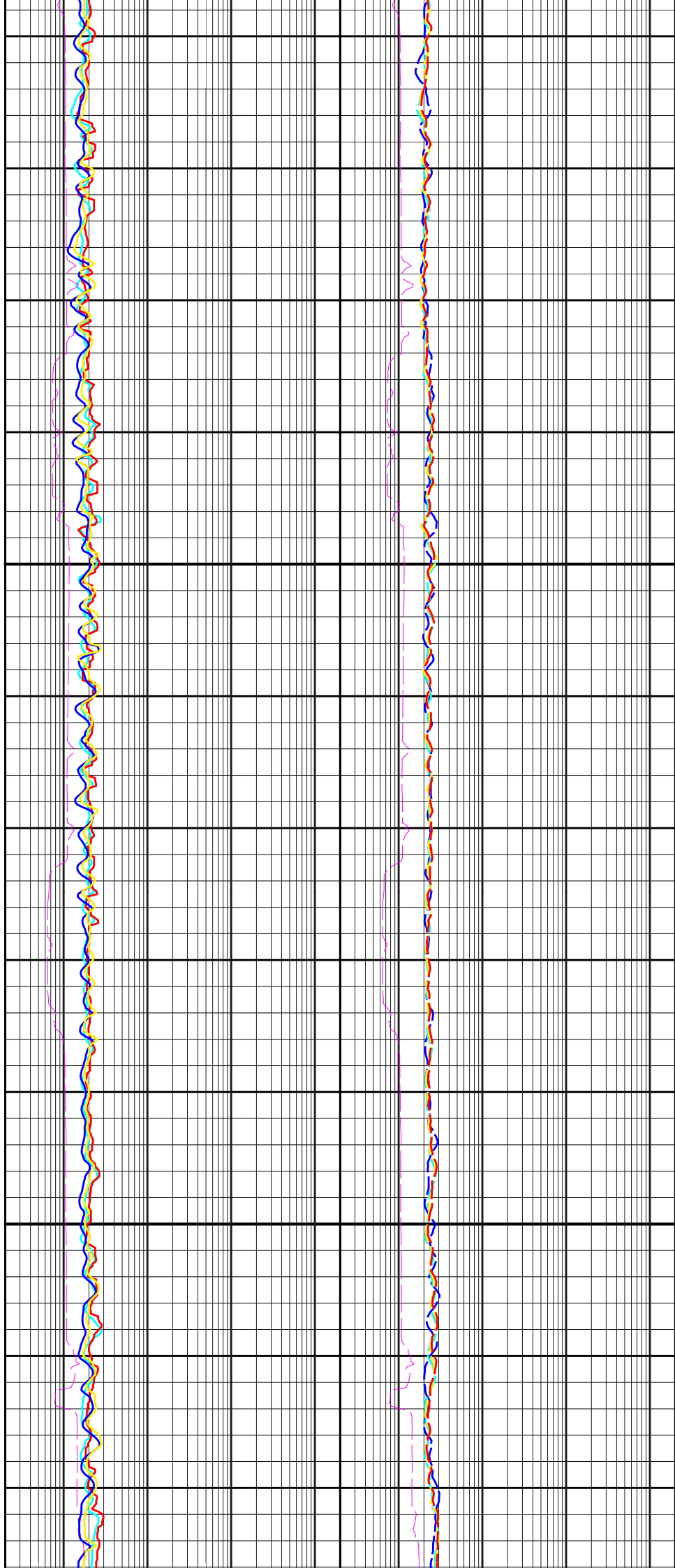


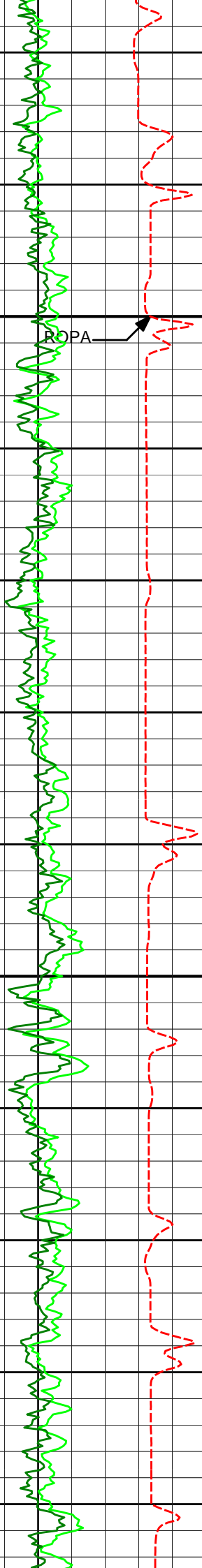




1150

TD





POPA

1200
EWXT-T

R24P-T

R24P-T

R42P-T

R24P-T

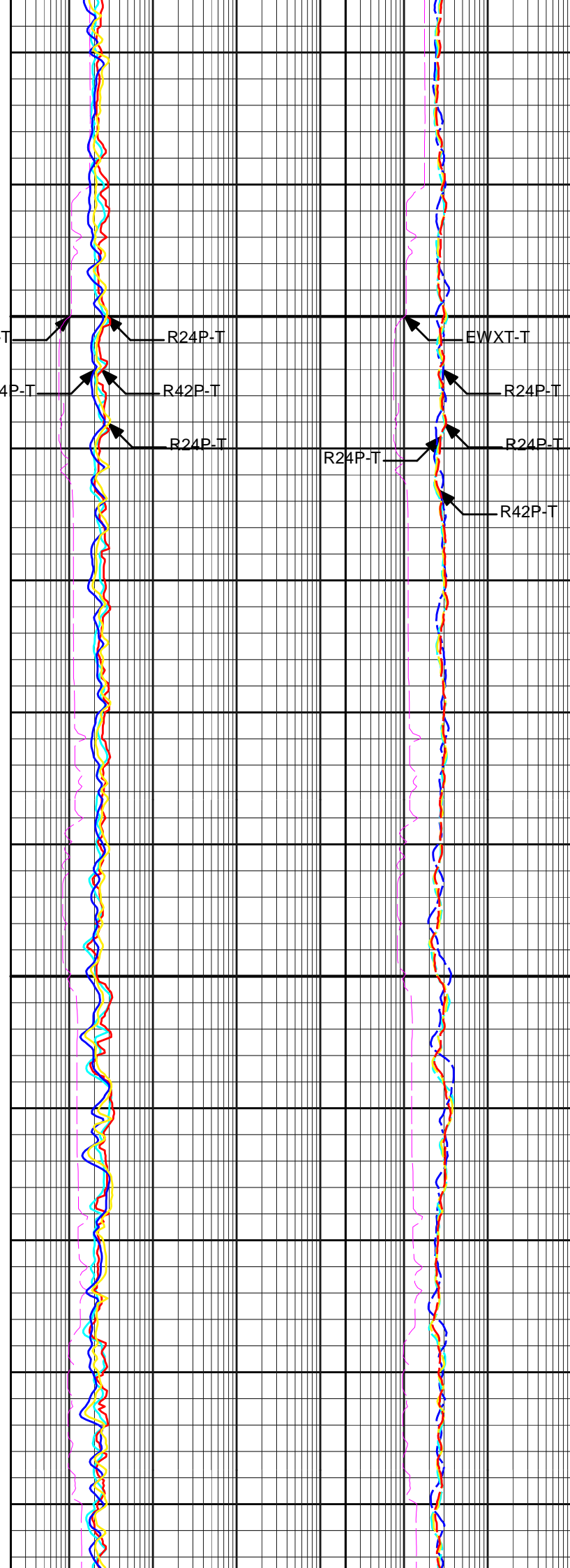
R24P-T

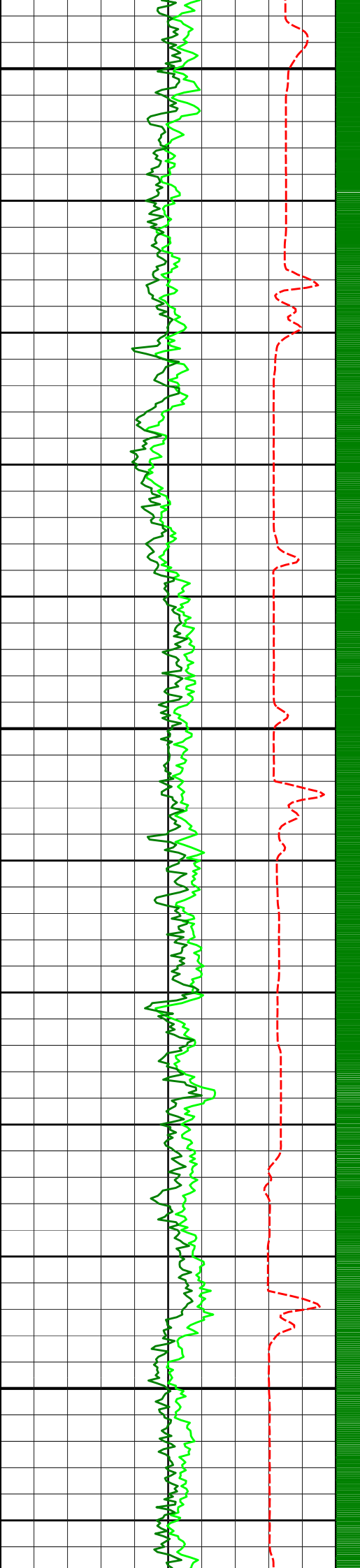
EWXT-T

R24P-T

R24P-T

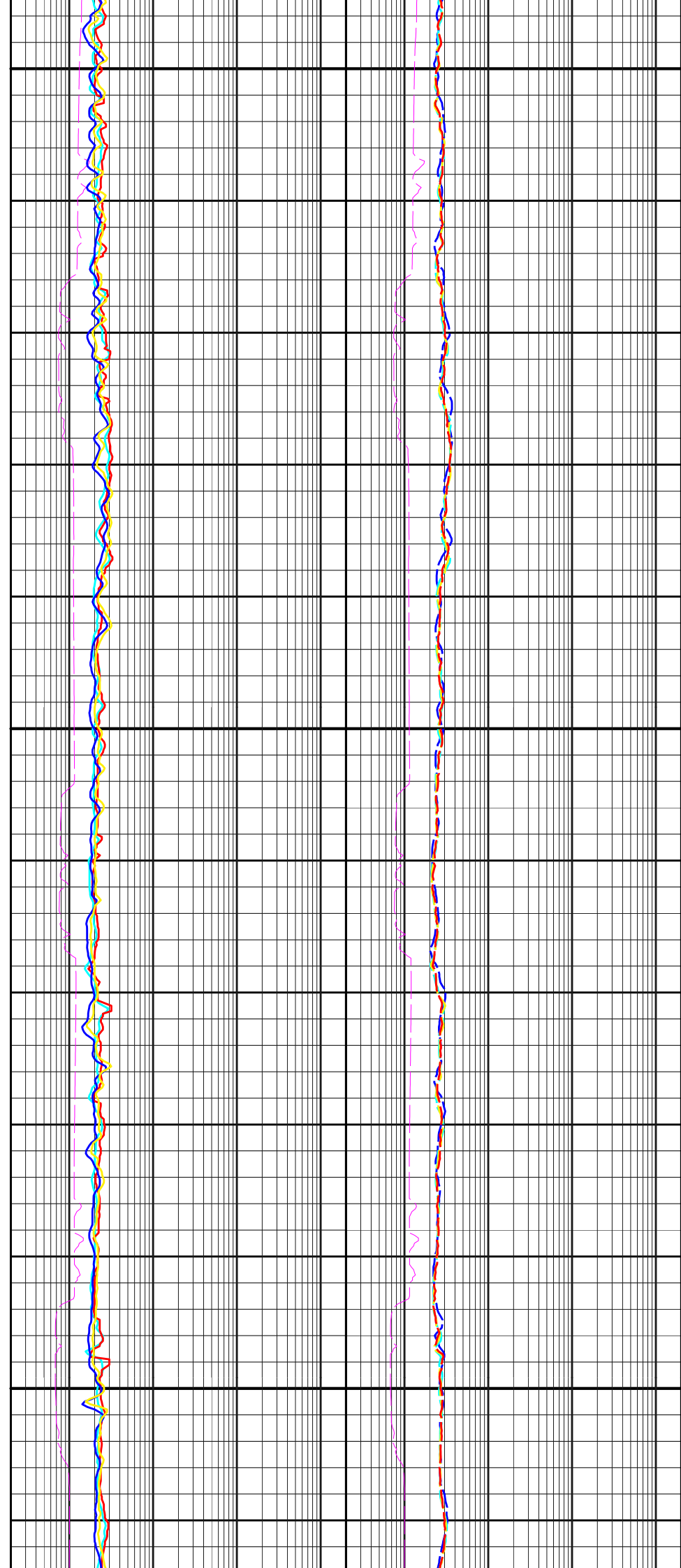
R42P-T

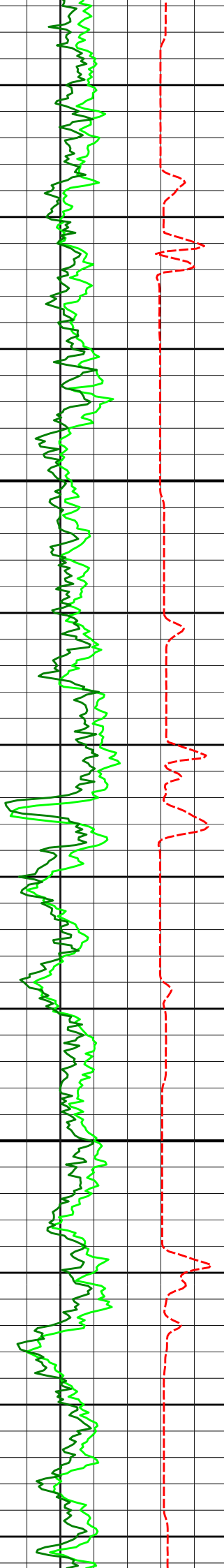




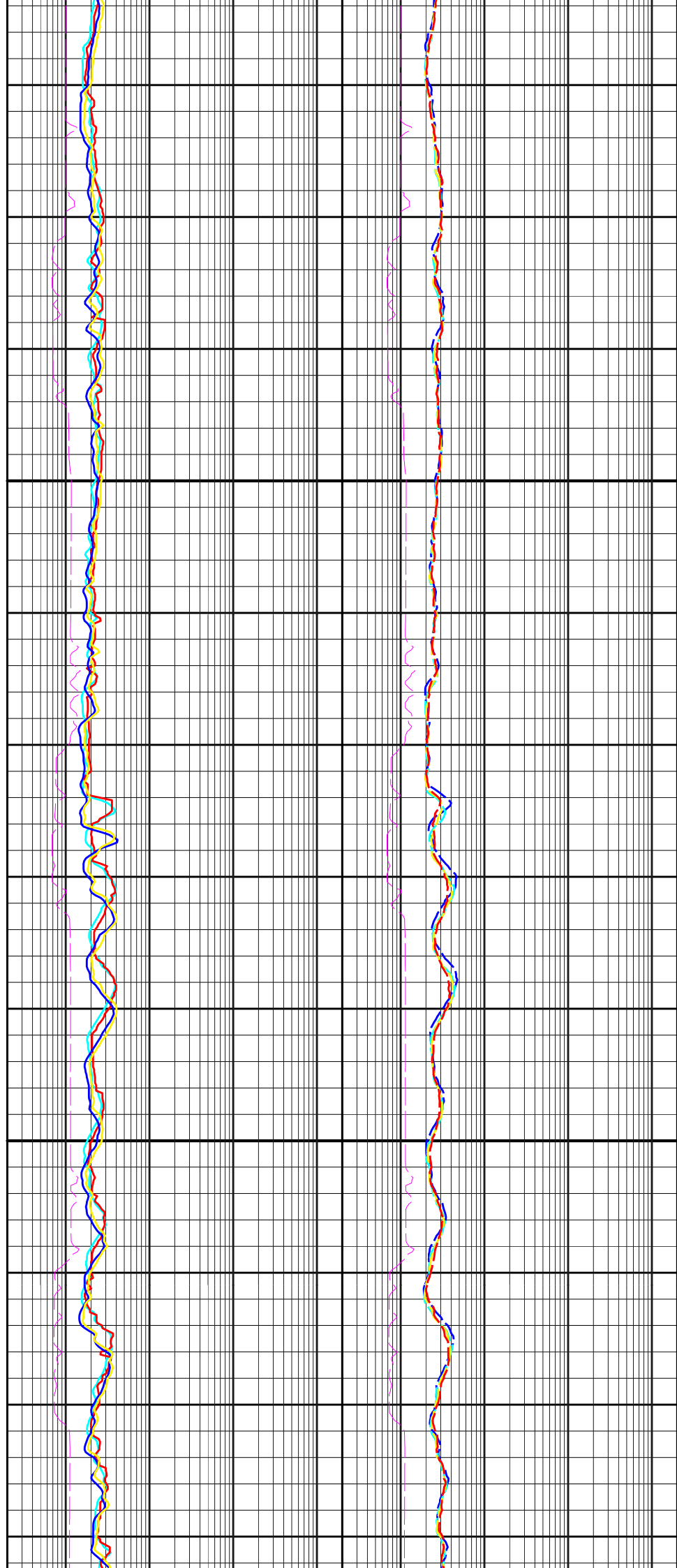
1250

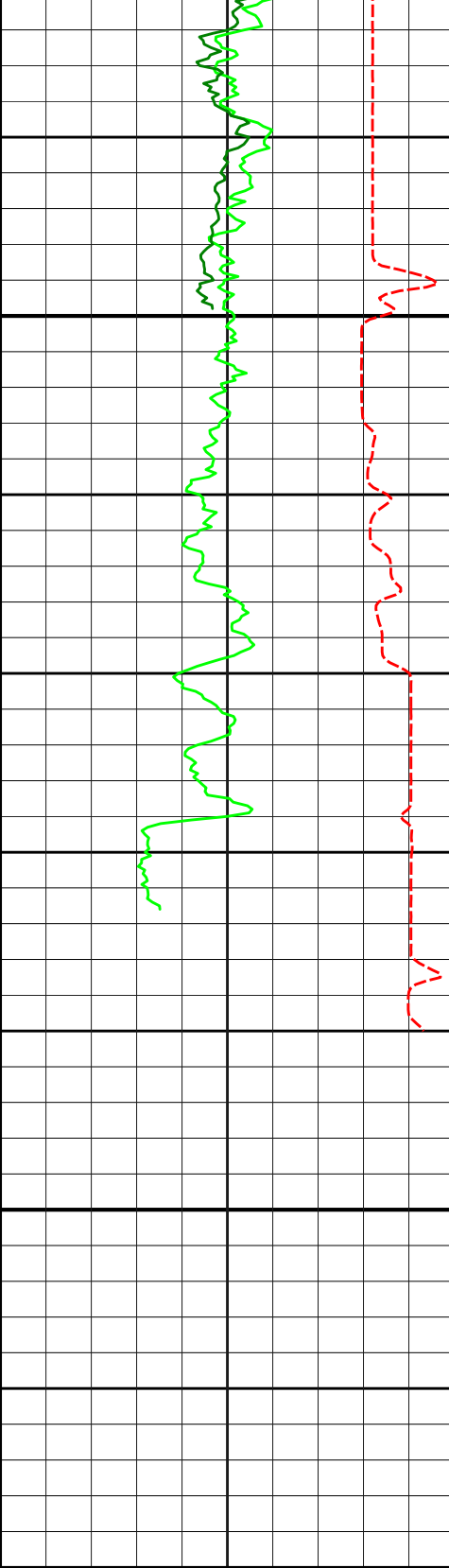
1300



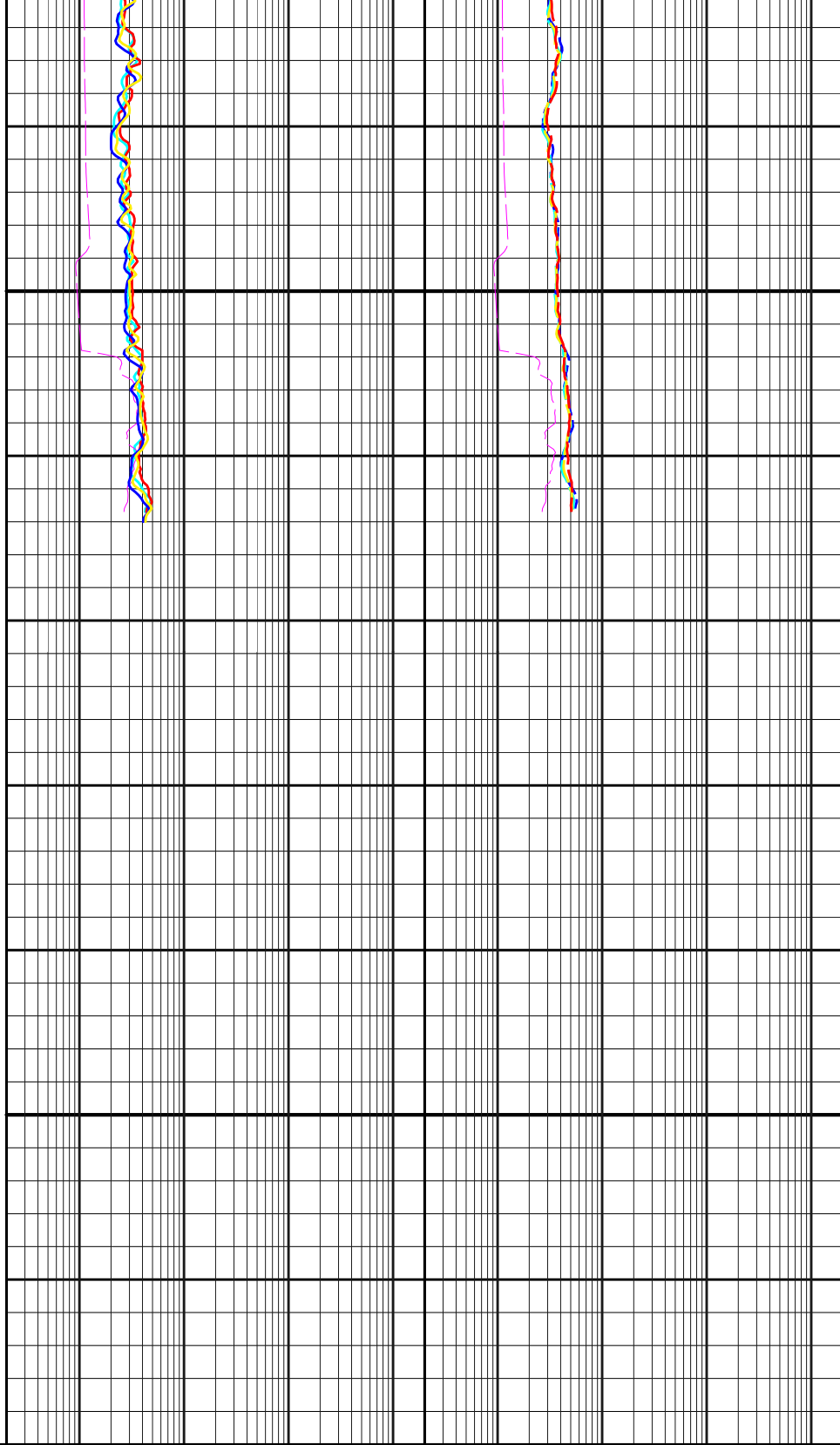


1350





TD
1400



IC Gamma Ray BCorr (ICGC) api 0 150

Depth m 1 : 200

39in Phase Resistivity BC (R39P) ohm-metre 0.2 2K

39in Atten Resistivity (R39A) ohm-metre 0.2 2K

PCG Gamma Ray BCorr (PGRC) api 0 150

Gamma Data Density pts/m

27in Phase Resistivity BC (R27P) ohm-metre 0.2 2K

27in Atten Resistivity (R27A) ohm-metre 0.2 2K

Avg Rate of Penetration (ROPA) metre per hr 100 0

15in Phase Resistivity BC (R15P) ohm-metre 0.2 2K

15in Atten Resistivity (R15A) ohm-metre 0.2 2K

9in Phase Resistivity BC (R9P) ohm-metre 0.2 2K

9in Atten Resistivity (R9A) ohm-metre 0.2 2K

EWR Formation Exp Time RT
(EWXT)

0.2

hours

2K

EWR Formation Exp Time RT
(EWXT)

0.2

hours

2K