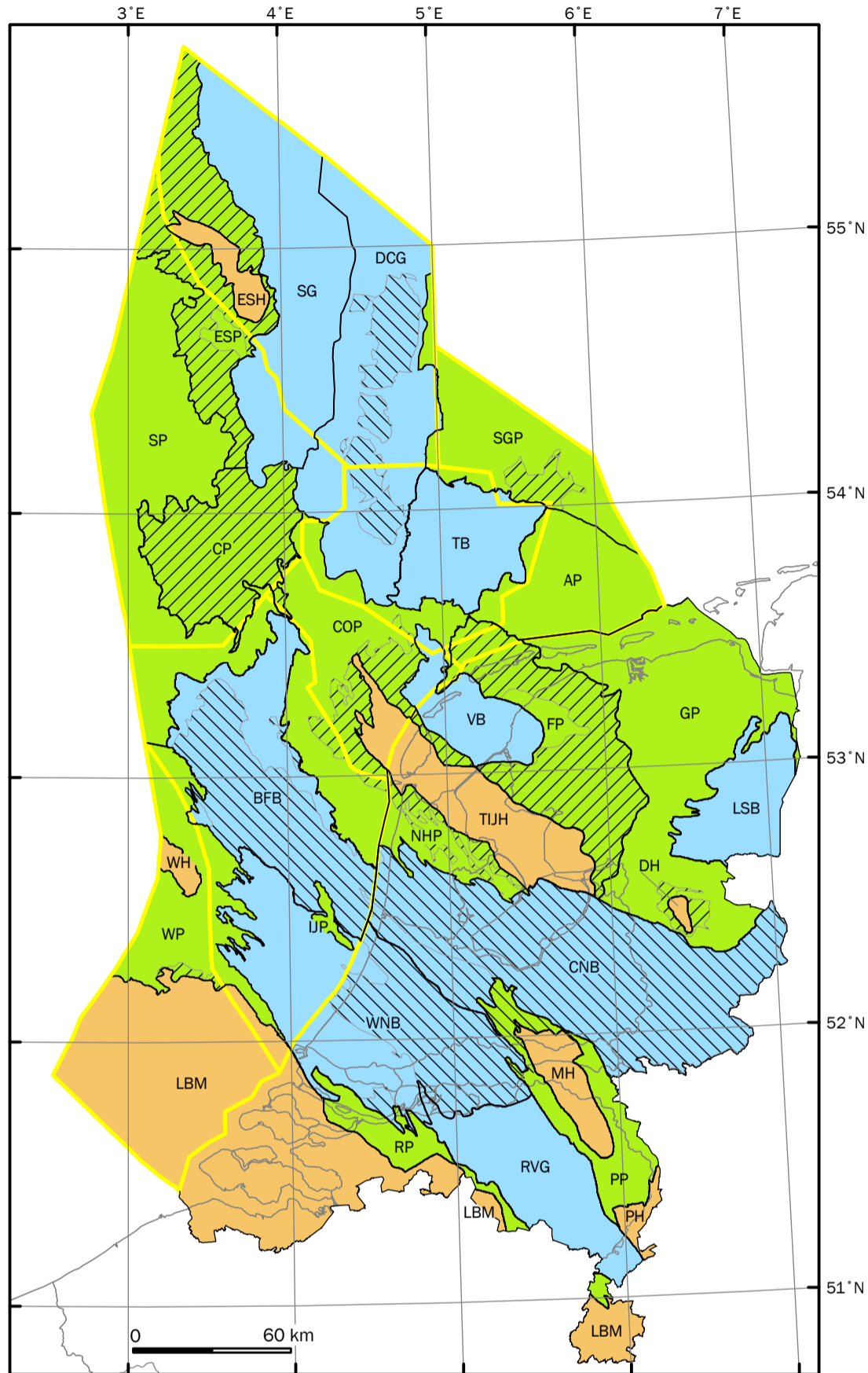


› **Tectono-stratigraphic
Charts
of the Netherlands
Continental Shelf**

February 2011

Late Jurassic - Early Cretaceous structural elements of the Netherlands



Legend

- Highs**
- Platforms**
 Cretaceous or Paleogene on top of Zechstein
 Cretaceous or Paleogene on top of Triassic
- Basins**
 Strongly inverted
 Mildly or not inverted
- Boundary of structural element
 Boundary of subarea used in mapping project

Highs

- | | |
|------|-----------------------|
| DH | Dalfsen High |
| ESH | Elbow Spit High |
| LBM | London-Brabant Massif |
| MH | Maasbommel High |
| PH | Peel High |
| TIJH | Texel-IJsselmeer High |
| WH | Winterton High |

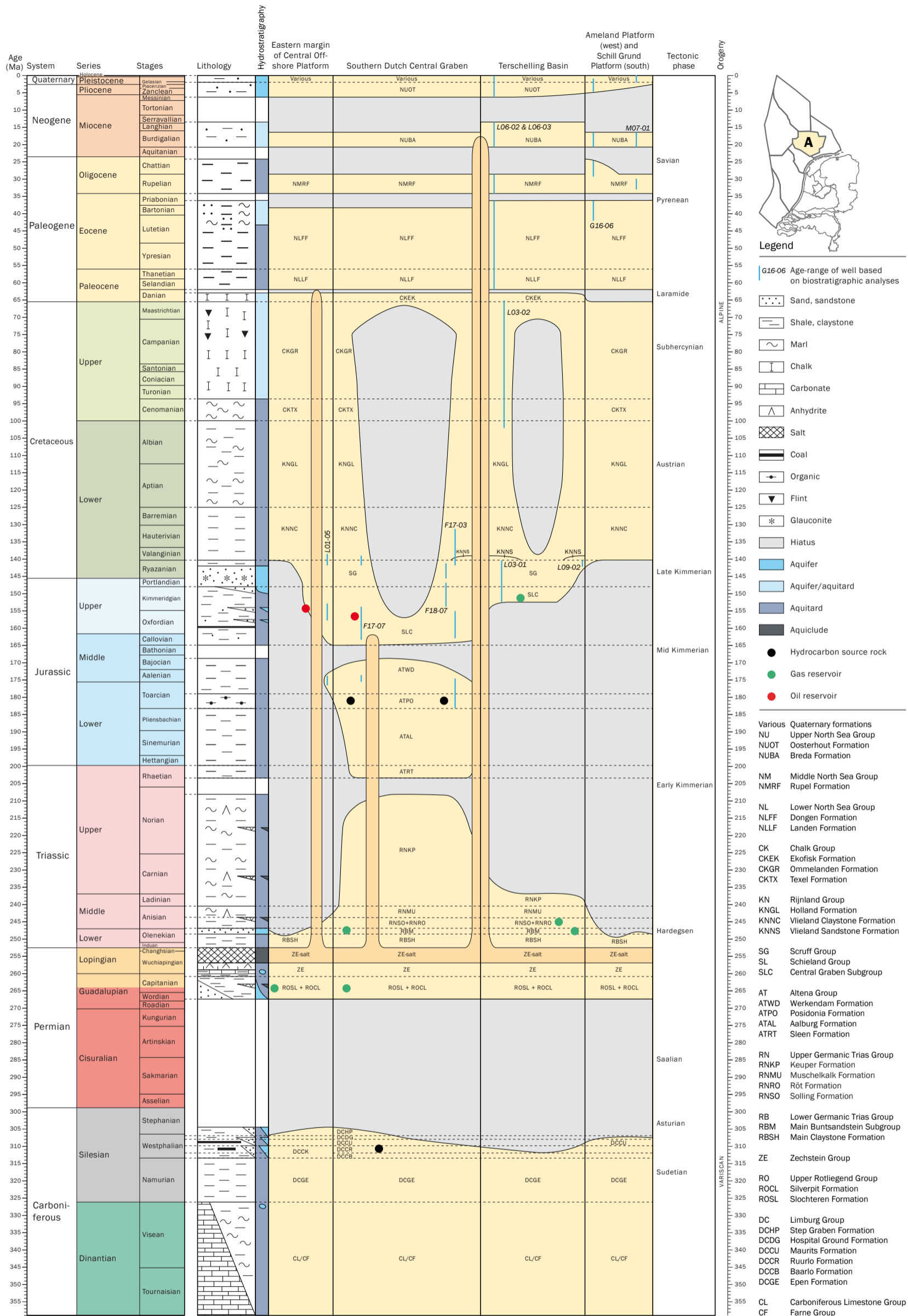
Platforms

- | | |
|-----|---------------------------|
| AP | Ameland Platform |
| COP | Central Offshore Platform |
| CP | Cleaverbank Platform |
| ESP | Elbow Spit Platform |
| FP | Friesland Platform |
| GP | Groningen Platform |
| NHP | Noord-Holland Platform |
| PP | Peel Platform |
| RP | Roer Platform |
| SGP | Schill Grund Platform |
| SP | Silverpit Platform |
| WP | Winterton Platform |
| IJP | Umuiden Platform |

Basins

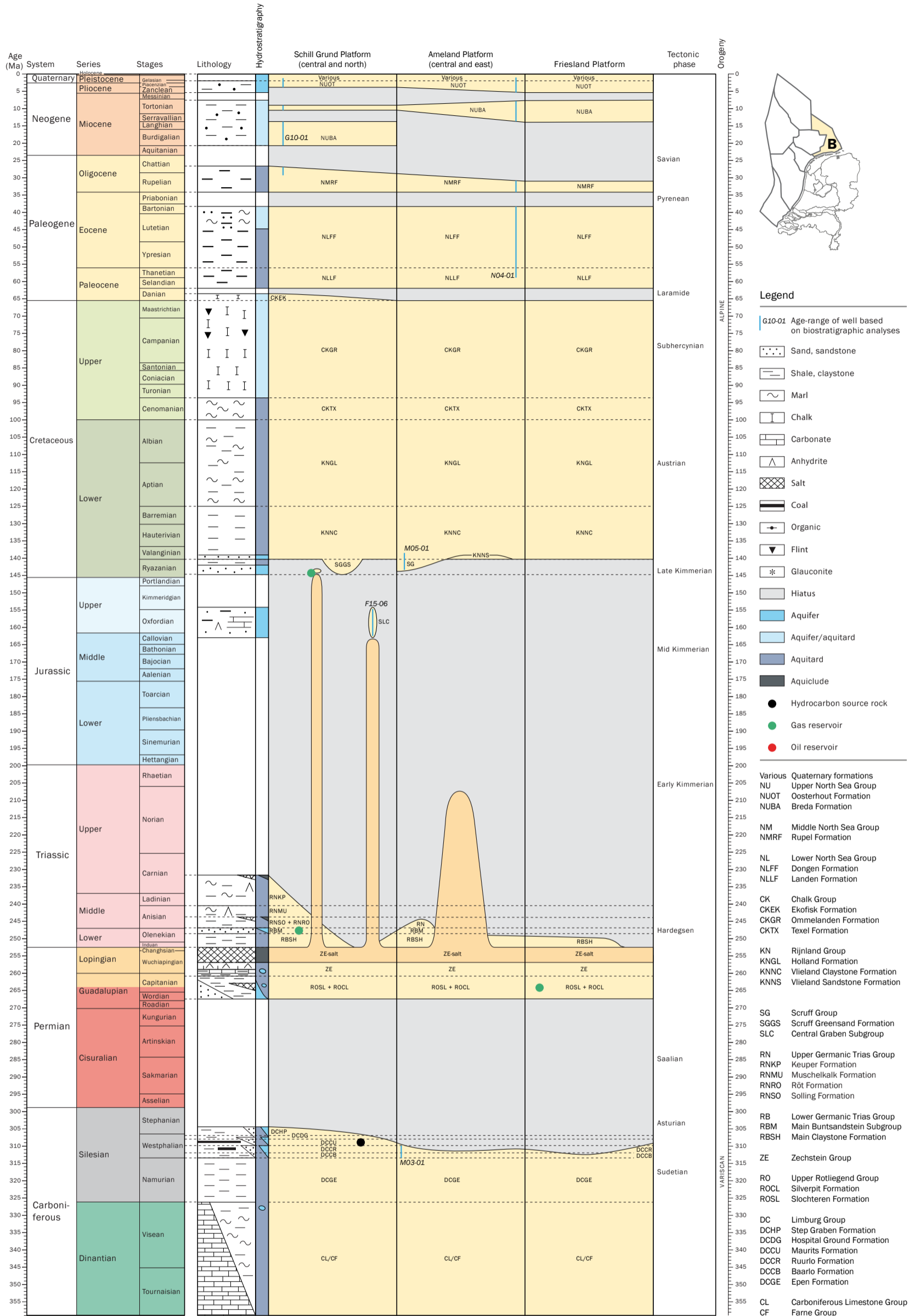
- | | |
|-----|---------------------------|
| BFB | Broad Fourteens Basin |
| DCG | Dutch Central Graben |
| CNB | Central Netherlands Basin |
| LSB | Lower Saxony Basin |
| RVG | Roer Valley Graben |
| SG | Step Graben |
| TB | Terschelling Basin |
| VB | Vlieland Basin |
| WNB | West Netherlands Basin |

Tectono-stratigraphic chart of the Dutch Central Graben, Terschelling Basin and surrounding platforms



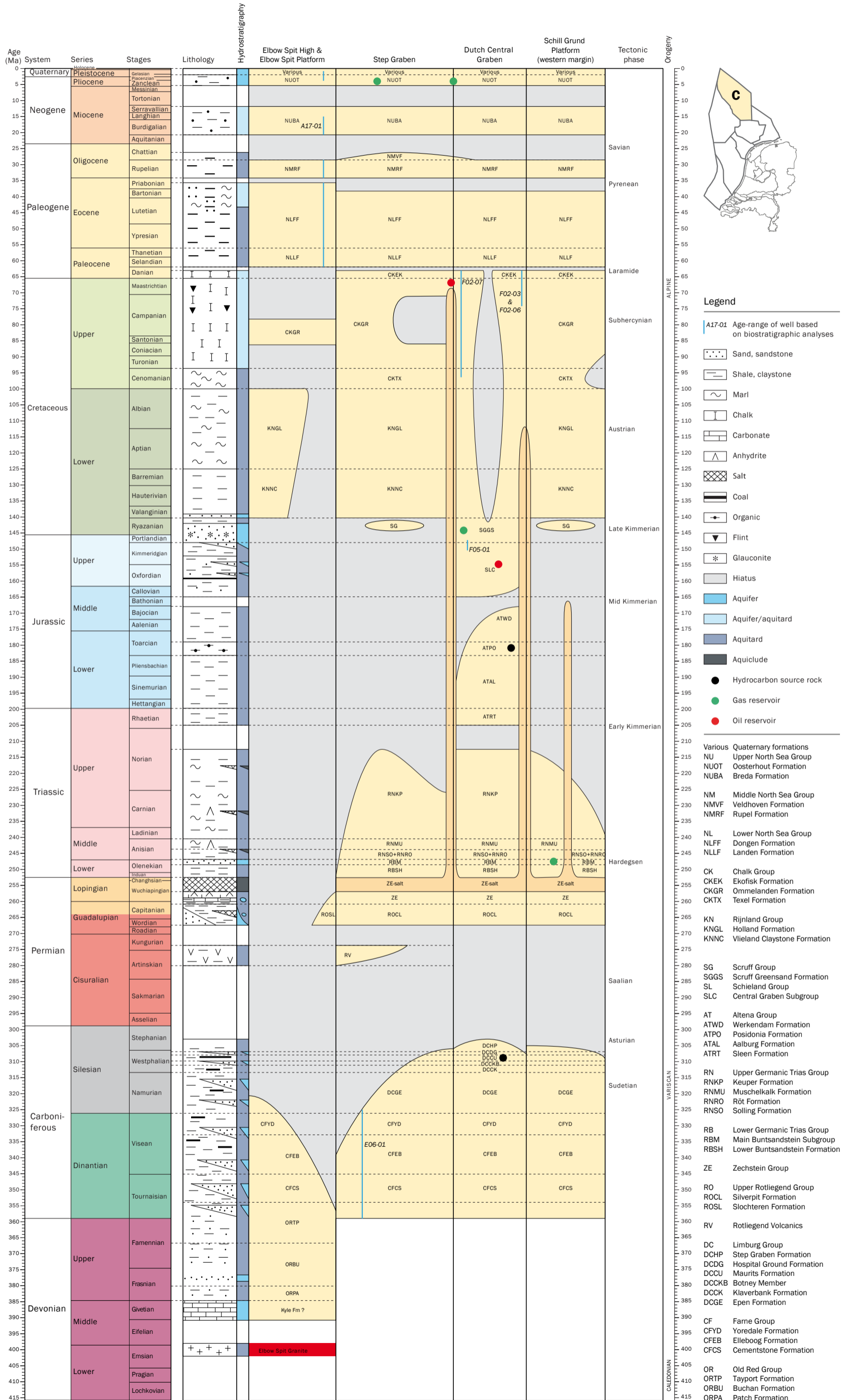
Timescale and ages mostly according to Gradstein et al. (2004), except (1) the Triassic (according to Kozur & Bachmann (2008)), (2) the Upper Jurassic (according to Munsterman & Verreussel (in prep)) and (3) the Quaternary (according to the International Commission on Stratigraphy (2009)). The Western European nomenclature is used for the Carboniferous series and stages.

Tectono-stratigraphic chart of the Schill Grund, Ameland and Friesland Platforms



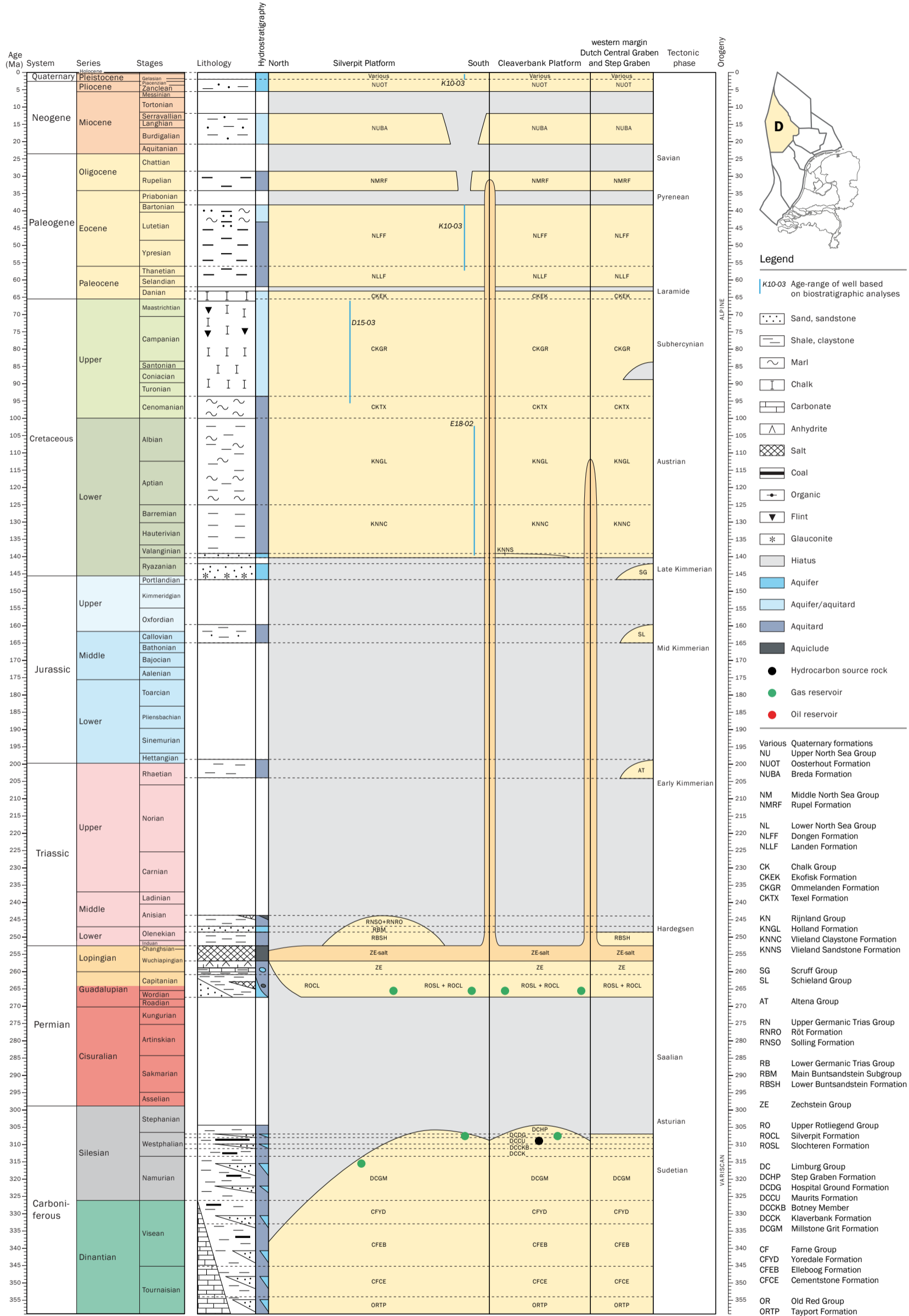
Timescale and ages mostly according to Gradstein et al. (2004), except (1) the Triassic (according to Kozur & Bachmann (2008)), (2) the Upper Jurassic (according to Munsterman & Verreussel (in prep)) and (3) the Quaternary (according to the International Commission on Stratigraphy (2009)). The Western European nomenclature is used for the Carboniferous series and stages.

Tectono-stratigraphic chart of the Step Graben, Dutch Central Graben and adjacent platforms and high



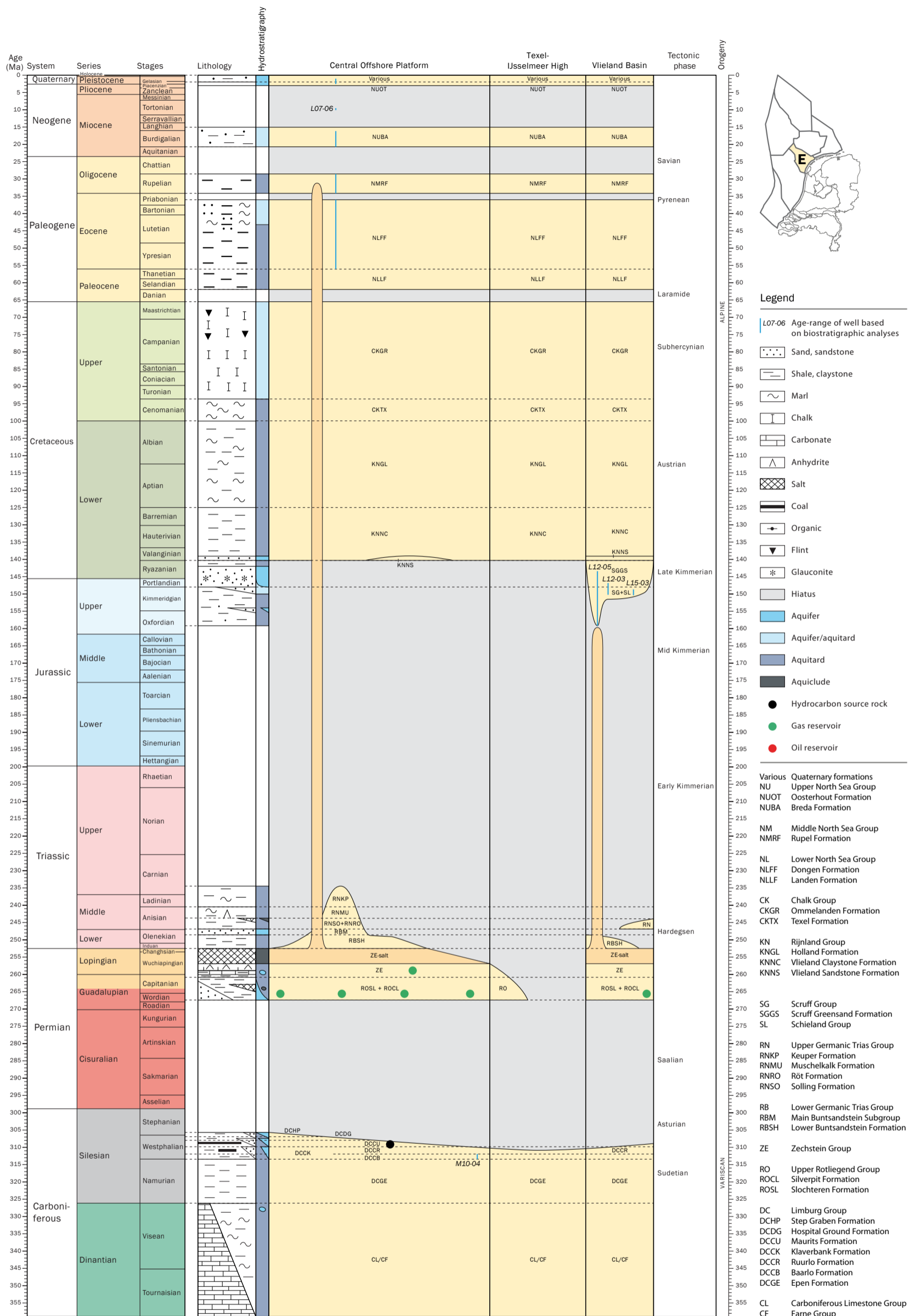
Timescale and ages mostly according to Gradstein et al. (2004), except (1) the Triassic (according to Kozur & Bachmann (2008)), (2) the Upper Jurassic (according to Munsterman & Verreussel (in prep)) and (3) the Quaternary (according to the International Commission on Stratigraphy (2009)). The Western European nomenclature is used for the Carboniferous series and stages.

Tectono-stratigraphic chart of the Elbow Spit, Silverpit and Cleaverbank Platforms and western margin of the adjacent grabens



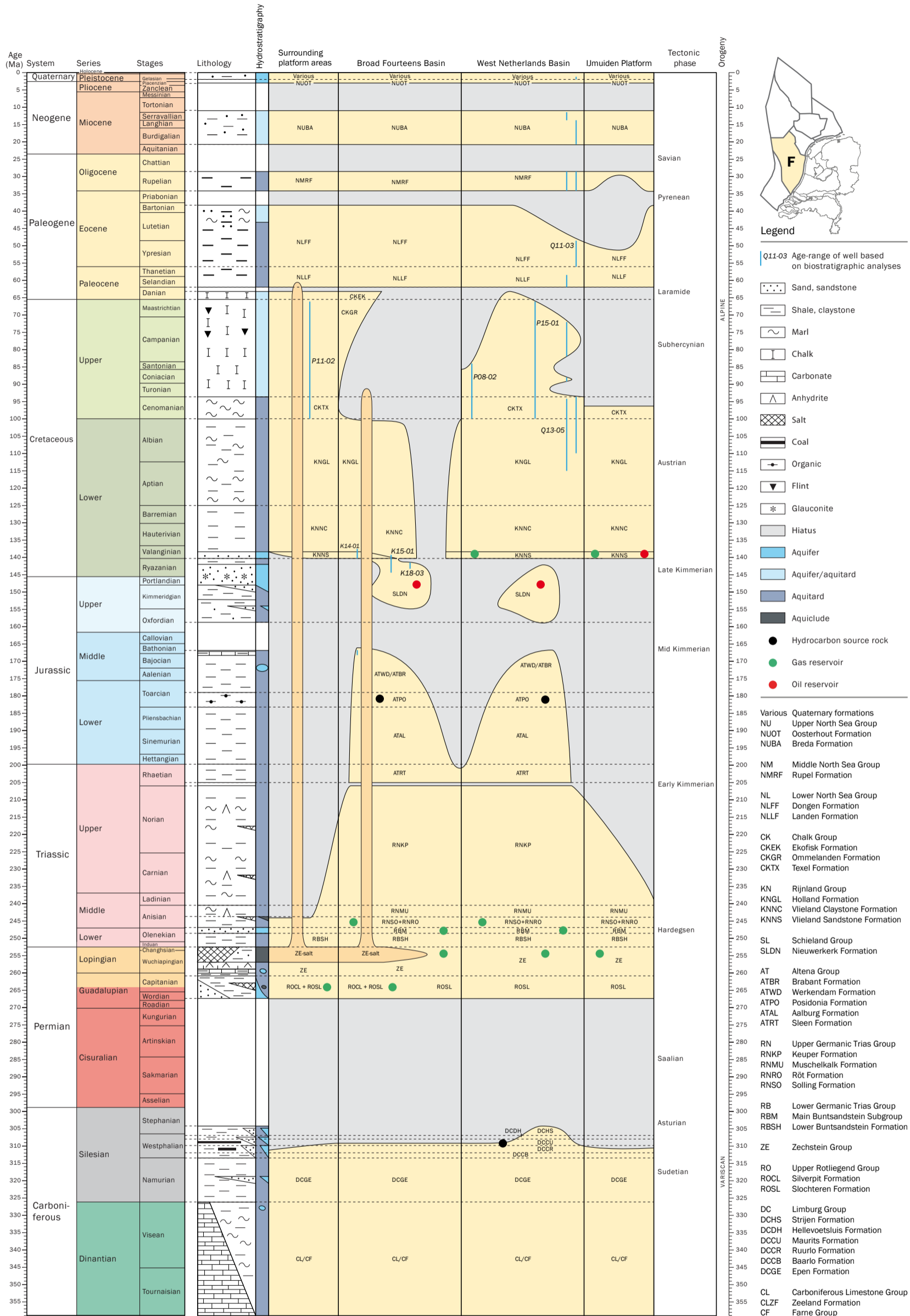
Timescale and ages mostly according to Gradstein et al. (2004), except (1) the Triassic (according to Kozur & Bachmann (2008)), (2) the Upper Jurassic (according to Munsterman & Verreussel (in prep)) and (3) the Quaternary (according to the International Commission on Stratigraphy (2009)). The Western European nomenclature is used for the Carboniferous series and stages.

Tectono-stratigraphic chart of the Central Offshore Platform, Texel-IJsselmeer High and Vlieland Basin



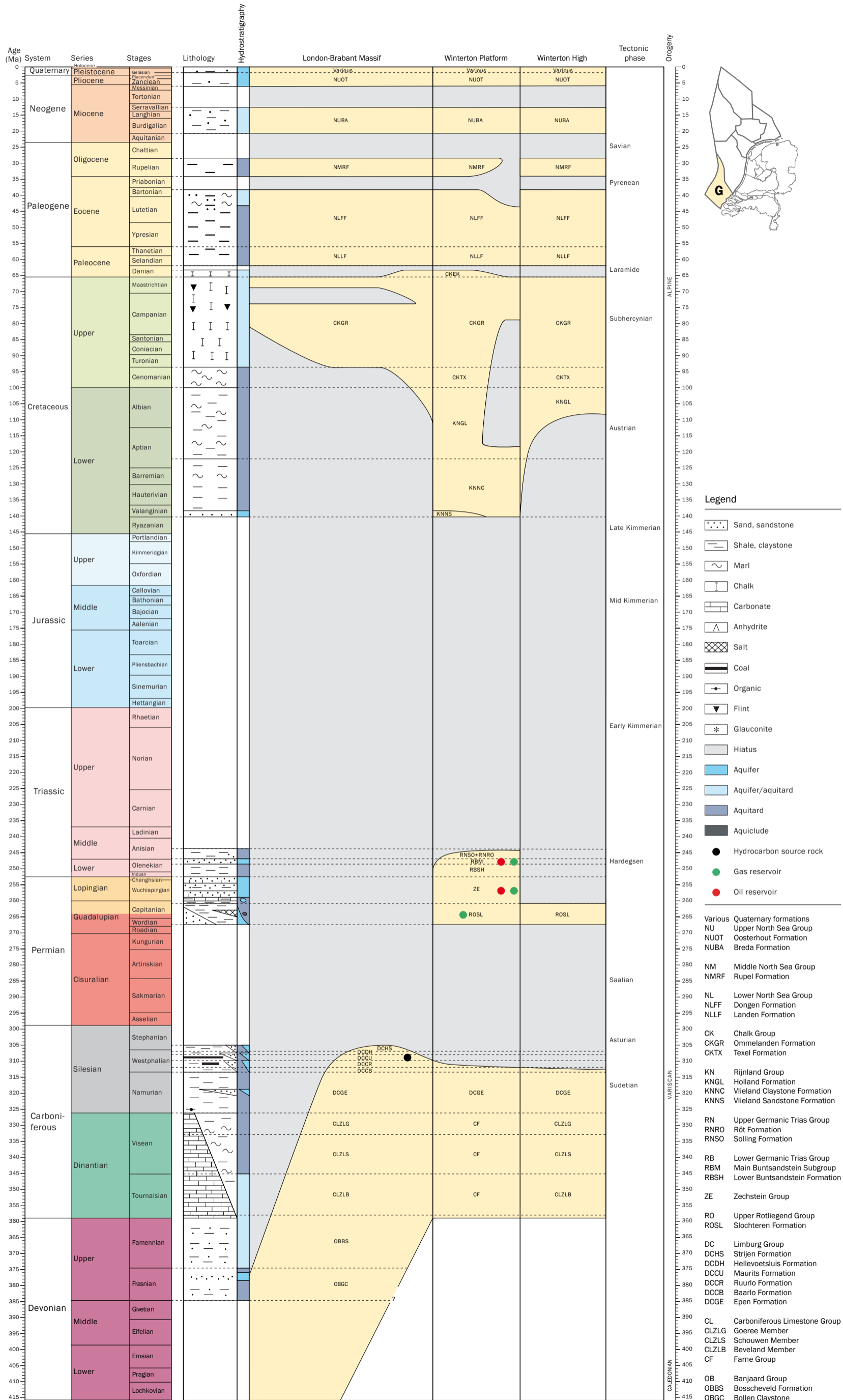
Timescale and ages mostly according to Gradstein et al. (2004), except (1) the Triassic (according to Kozur & Bachmann (2008)), (2) the Upper Jurassic (according to Munsterman & Verreussel (in prep)) and (3) the Quaternary (according to the International Commission on Stratigraphy (2009)). The Western European nomenclature is used for the Carboniferous series and stages.

Tectono-stratigraphic chart of the Broad Fourteens Basin, West Netherlands Basin and surrounding platforms



Timescale and ages mostly according to Gradstein et al. (2004), except (1) the Triassic (according to Kozur & Bachmann (2008)), (2) the Upper Jurassic (according to Munsterman & Verreussel (in prep)) and (3) the Quaternary (according to the International Commission on Stratigraphy (2009)). The Western European nomenclature is used for the Carboniferous series and stages.

Tectono-stratigraphic chart of the London-Brabant Massif, Winterton Platform and Winterton High



Timescale and ages mostly according to Gradstein et al. (2004), except (1) the Triassic (according to Kozur & Bachmann (2008)), (2) the Upper Jurassic (according to Munsterman & Verreussel (in prep)) and (3) the Quaternary (according to the International Commission on Stratigraphy (2009)). The Western European nomenclature is used for the Carboniferous series and stages.