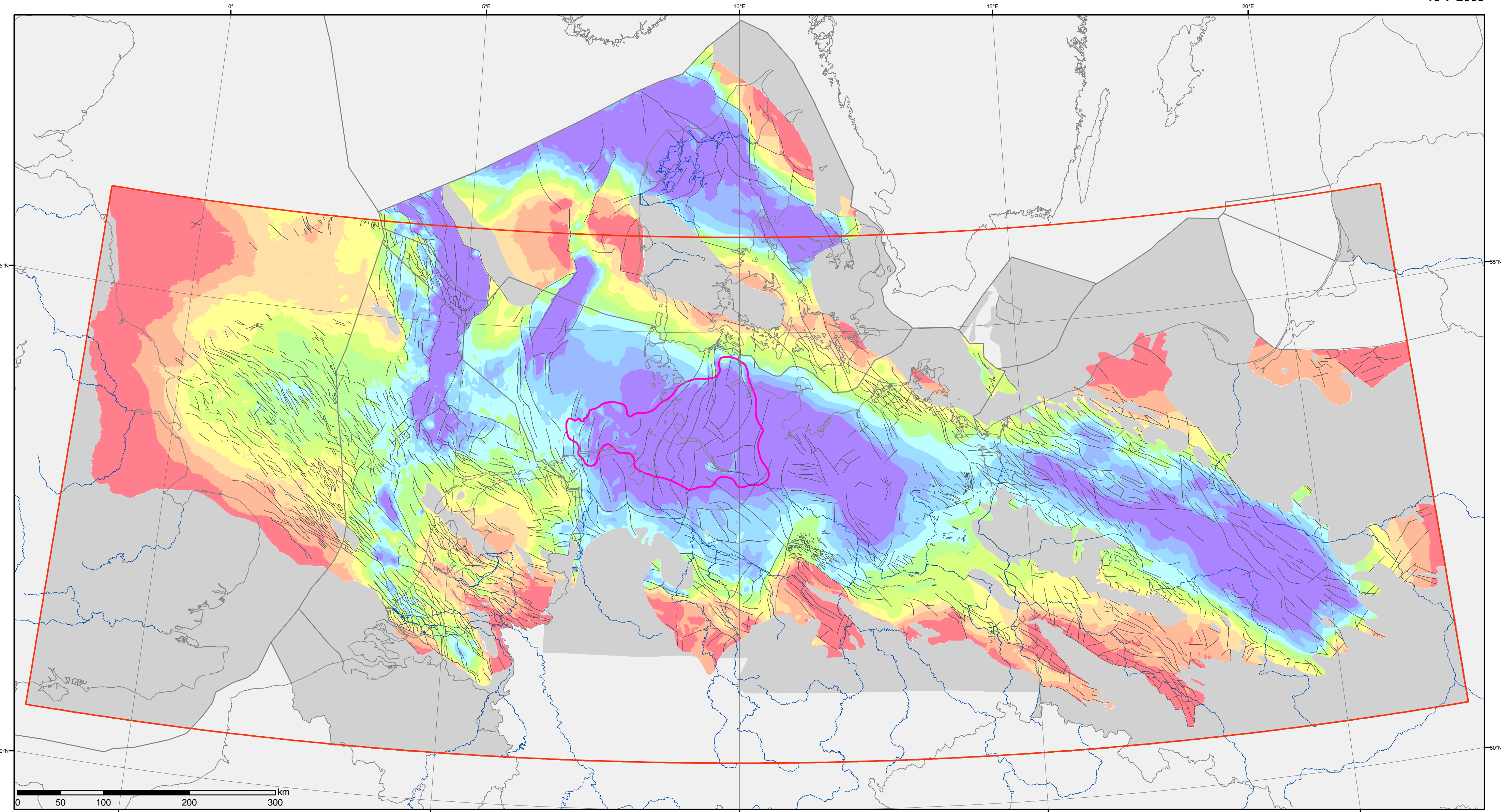


# Depth to the base of the upper Rotliegend clastics

Ch07  
fig.7.2  
15-7-2009



**Depth in metres below sealevel**

< 1500	2500 - 3000	4000 - 4500	> 5500
1500 - 2000	3000 - 3500	4500 - 5000	not present
2000 - 2500	3500 - 4000	5000 - 5500	not included in the Atlas
			map compilations

fault

no distinction between Rotliegend salt and Zechstein salt (inside polygon)