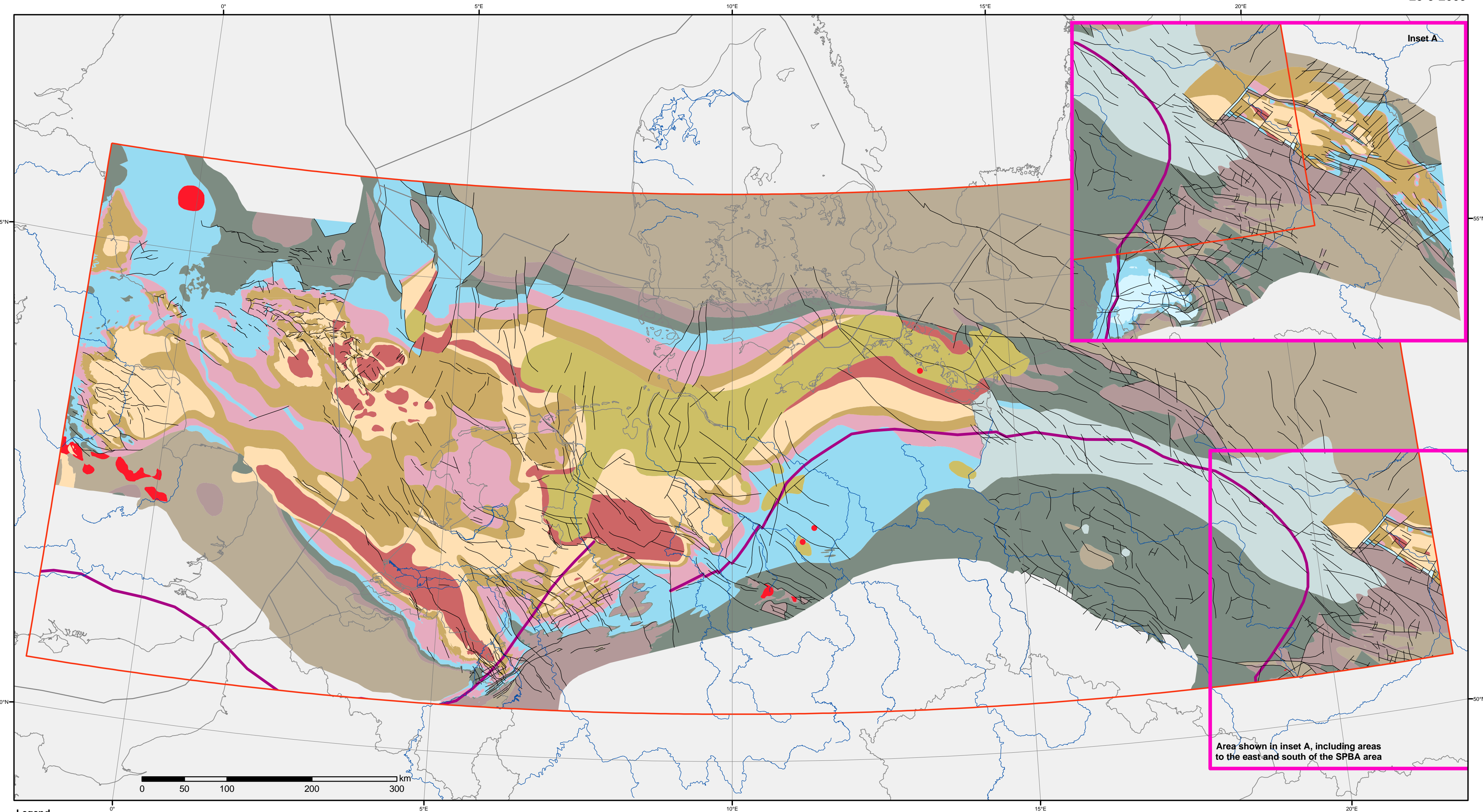


Permian subcrop map in the SPB area (incl inlet Lublin Basin)

Ch06
fig.6.4
25-5-2009



Legend

- Faults
- Variscan deformation front

Subcrop

- | | |
|-------------|---------------------------------|
| Stephanian | Westphalian |
| Asturian | Namurian |
| Bolsovian | Namurian/Westphalian |
| Duckmantian | Devonian |
| Langsettian | Pre-Devonian |
| | Igneous |
| | no data used/ no data available |