

UGOU022-SCAN023 Weak Shots Report

GTO-19-C031-02 SCAN Acquisition Seismic Processing Order #2

16 NOVEMBER 2020

Energie Beheer Nederland B.V.

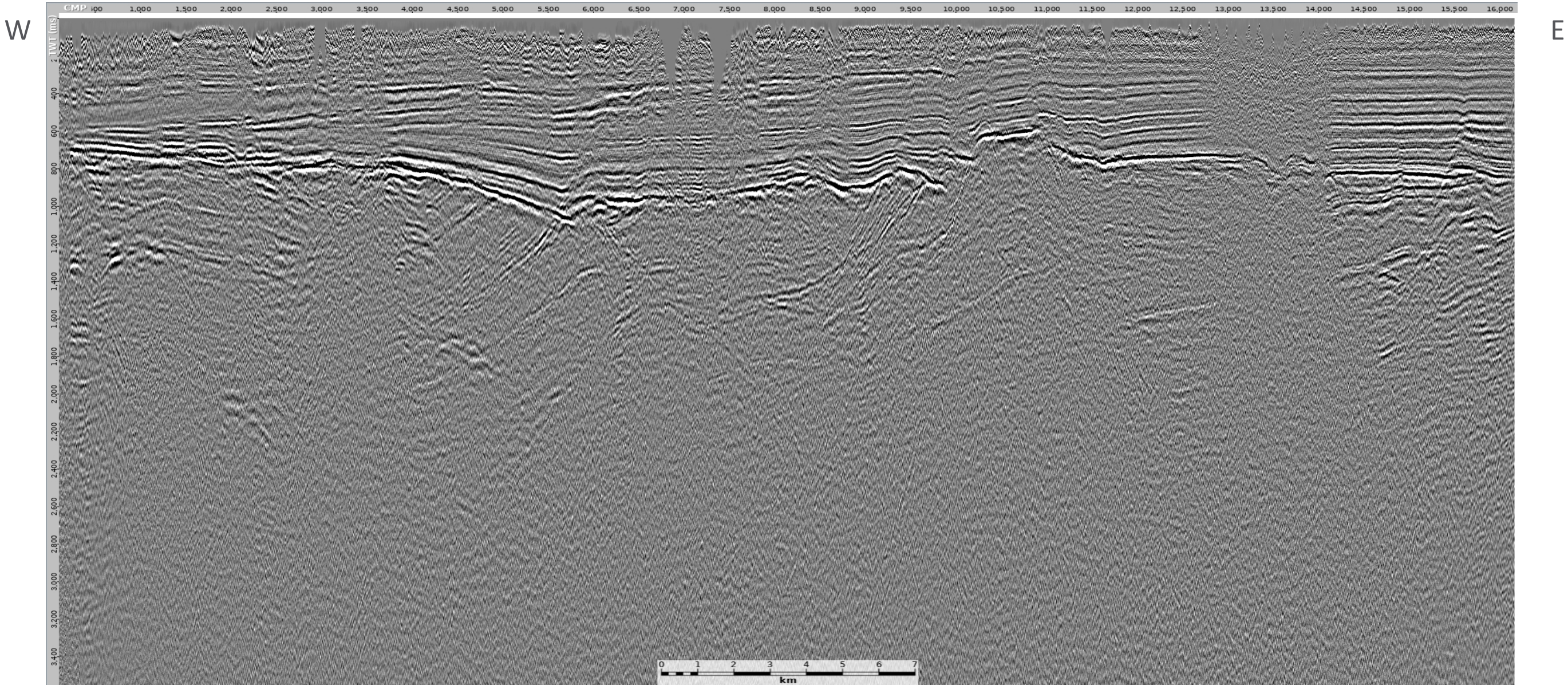
2D Seismic PreSTM Processing, Onshore Netherlands

- The line UGOU022-SCAN023 had an area of weak signal (CDPs ~7350 to ~8030).
- This area of weak signal was due to weak shots:
 - Records 1082-1137
 - Corresponding to shotpoints 7372-8027
- This area of weak shots approximately correlates with the higher elevations (> 10 m at ~7350 to ~8050) caused by glacial moraine deposits (refer to section 5.2 in the “line completion report” for UGOU022).
- This is an area of forest/heath/meadows near Austerlitz.

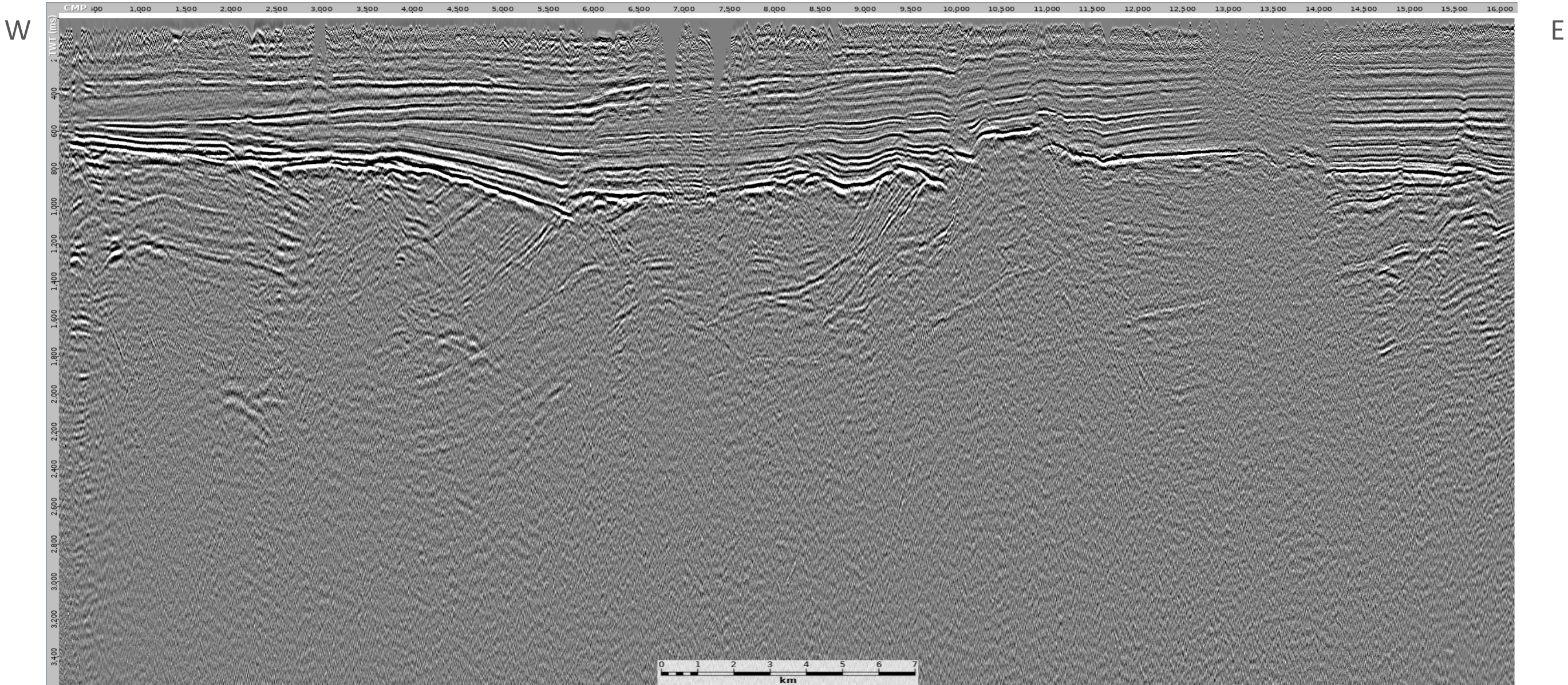
Processing sequence applied to stacks

- Data reformat: SEGY to internal format
- Geometry: Crooked line with 2.5 m CDP interval
- Weak shots: 0-500 m offsets only
- Spherical divergence correction: T
- Geophone response correction:
- Statics: Elevation (1700 m/s) or delay time using $V_0=1000$ m/s $V_R=1700$ m/s $SRD=NAP$
- Edits: Kill invalid shots and receivers
- DBS: Trace-by-trace with 160 ms operator length with 16 ms predictive gap
0.1% white noise stabilisation - Design window: 200-3000 ms
- Velocity analysis: Initial 1 km interval
- Scaling: 500 ms AGC
- Stack: $1/\sqrt{N}$ with 55° mute
- Static: Static to shift from floating to final datum (NAP)
- Bandpass filter: 8-12-120-150 Hz

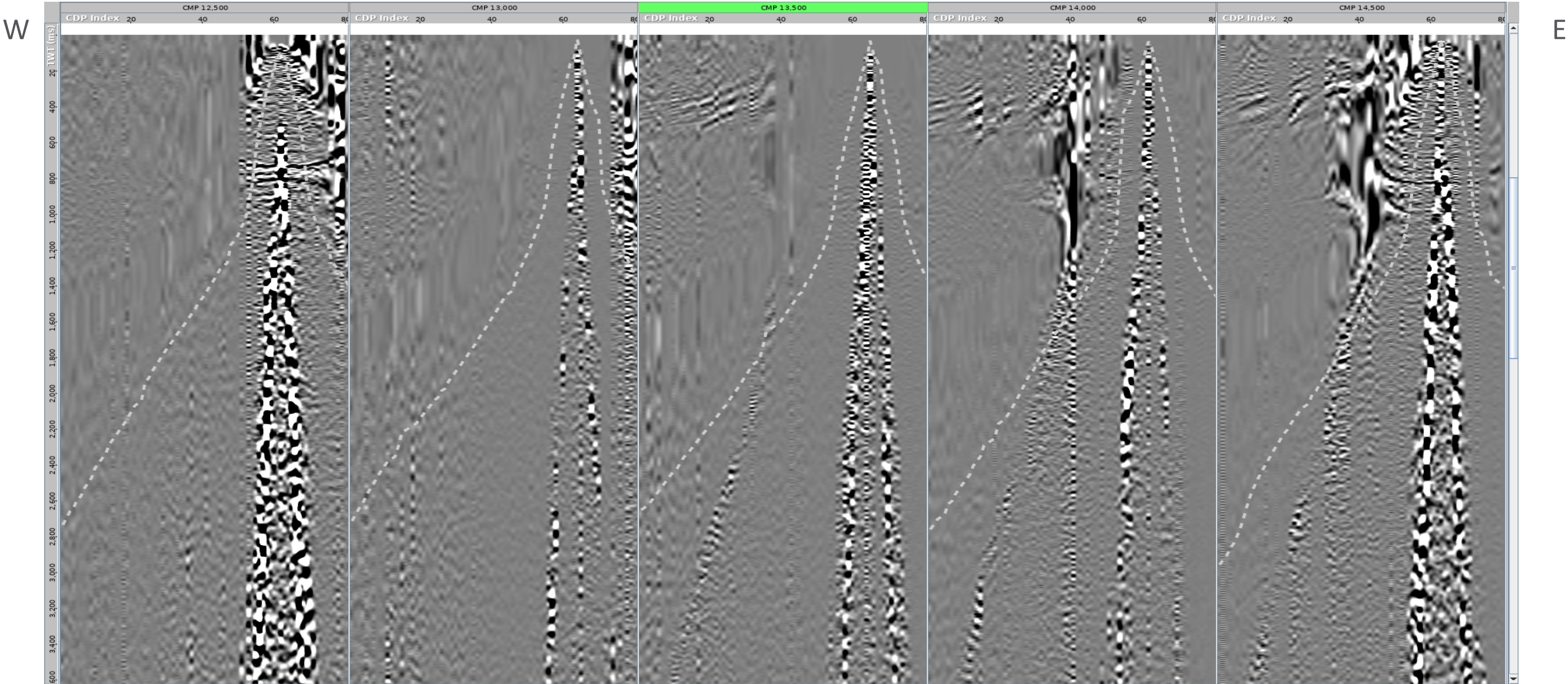
UGOU022-SCAN023 elevation statics stack



UGOU022-SCAN023 refraction statics stack

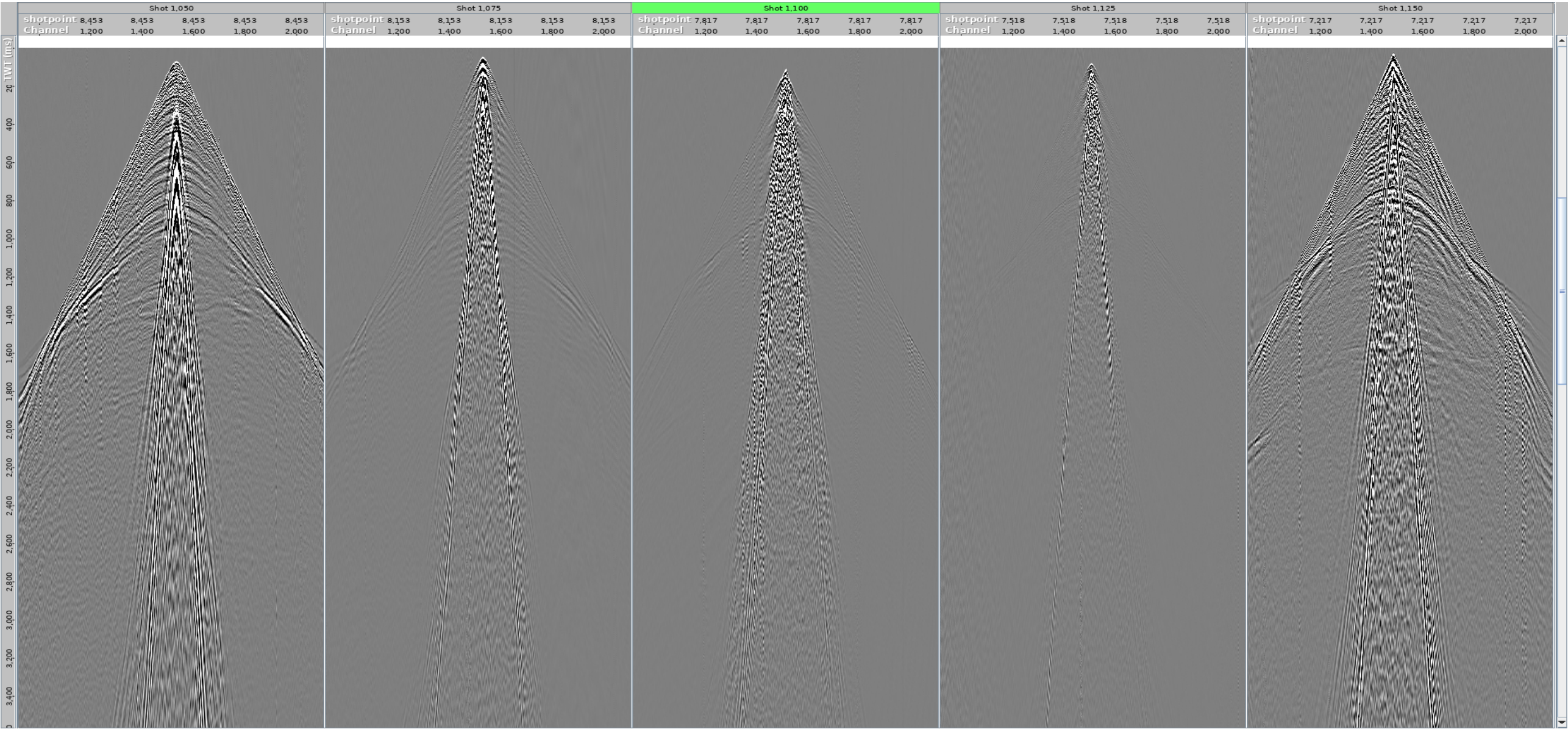


UGOU022-SCAN023 raw CDPs with NMO applied





W



E