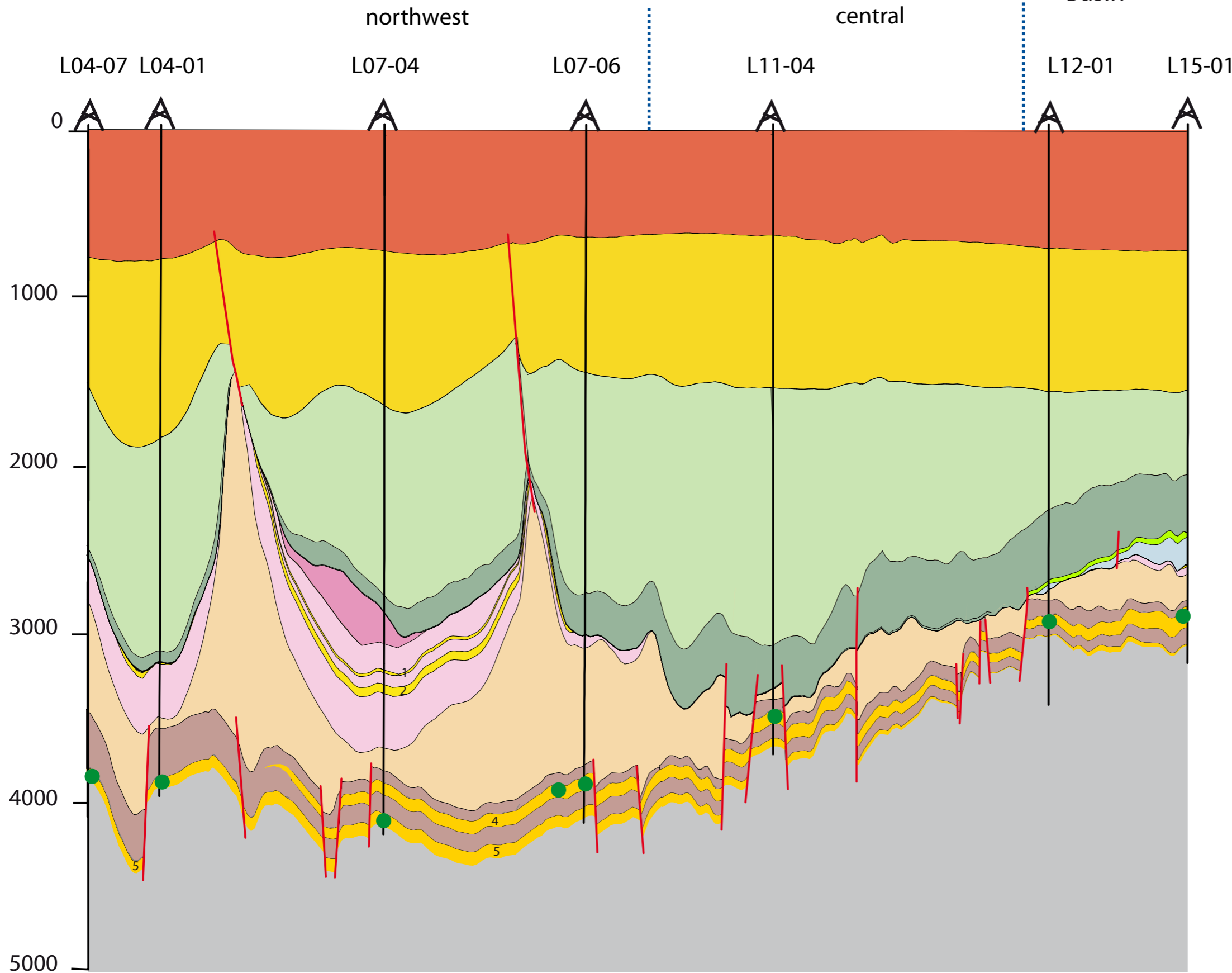
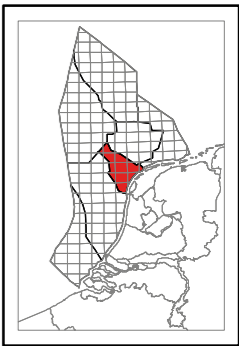


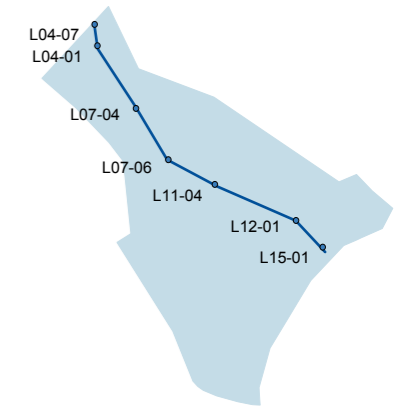
C NW Central Offshore Platform Vlieland Basin **C'** SE



- Upper North Sea Group
- Lower and Middle North Sea groups
- Chalk Group
- Rijnlant Group
- Schieland Group
- Upper Germanic Trias Group
- Lower Germanic Trias Group
- Zechstein Group
- Upper Rotliegend Group
- Limburg Group

Reservoir rocks

- KNNS
- 1 RBMDL
- 2 RBMVL
- 3 ROSL
- 4 ROSLU
- 5 ROSLL
- gasfield



This cross-section shows the pinch-out of the Upper Slochteren Sandstone in northerly direction. Halokinese has affected the post-Permian strata in the northwestern part of the Central Offshore Platform. In the depletion areas Triassic sediments with the Lower Volpriehausen and Lower Detfurth sandstones have been preserved though they are not gas bearing in this area due to salt sealing. In the Vlieland Basin Upper Jurassic and Lower Cretaceous rocks rest on a remnant of the Lower Germanic Trias Group. The Friesland Member is a non-producing reservoir rock in this area.

