



# Your gateway to Dutch E&P data

## Netherlands Oil and Gas Portal: [www.nlog.nl](http://www.nlog.nl)

### Introduction

The Netherlands is still an attractive and challenging area for the oil and gas exploration and production, albeit mature and with a long history of exploration and production. Since a few years the major E&P operators tend to migrate to other countries, releasing fields and blocks in the Netherlands that are not yet completely depleted or explored.

The current E&P situation in the Netherlands offers a challenge for companies that are at best when they can use their innovative, smaller scale power to extract the most from producing fields, cost efficiently develop tight and marginal fields, and for companies that dare to take chances on smaller prospects.

The Dutch government encourages independent operators to work in the Netherlands offshore and onshore area.

Recently, a web portal dedicated to the oil and gas industry was created, the Netherlands Oil and Gas Portal: [www.nlog.nl](http://www.nlog.nl). This portal is the gateway to all E&P related data and information supplied by the government.

On [www.nlog.nl](http://www.nlog.nl) you can find and download or order:

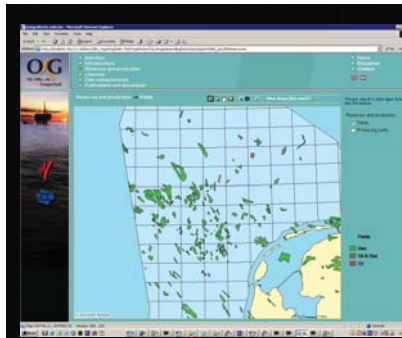
#### Data:

- Wells:
  - Composite well logs
  - Production data
  - public domain well data
- Fields: production plans
- Seismic: 2D and 3D seismic
- Datasets on e.g. gas quality and maps

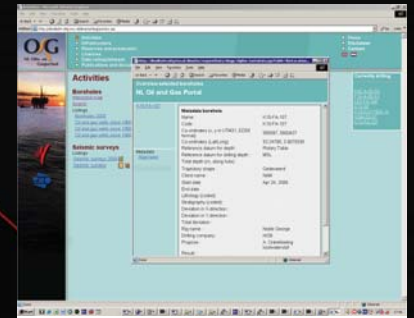
#### Information:

- Licences & Infrastructure
- Legislation, administrative procedures
- Fees, Taxes and State participation
- Reserves and Production reports

All information and data can be easily found or searched using a simple search form, or by using an interactive map interface.



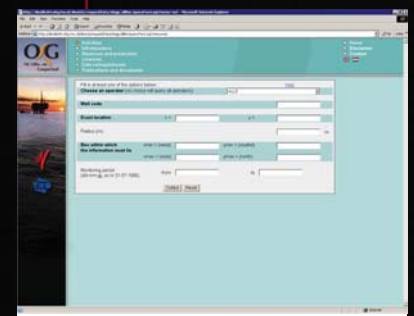
Reserves and production data of fields and boreholes



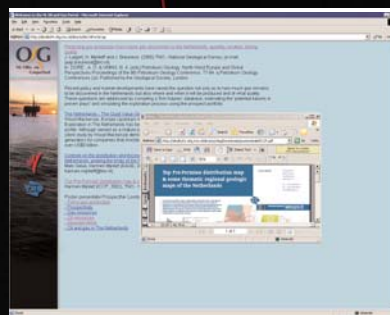
Information on current drilling activities



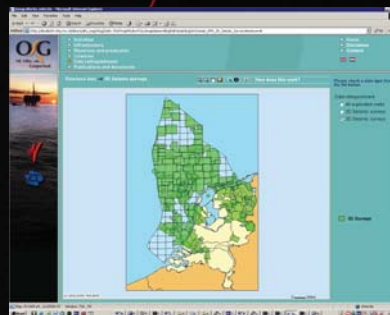
Legislation



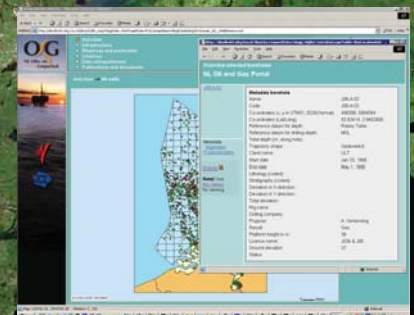
Comprehensive search possibilities



Reports and datasets



Data relinquishment of 3D seismic data



Search interface for boreholes to obtain metadata