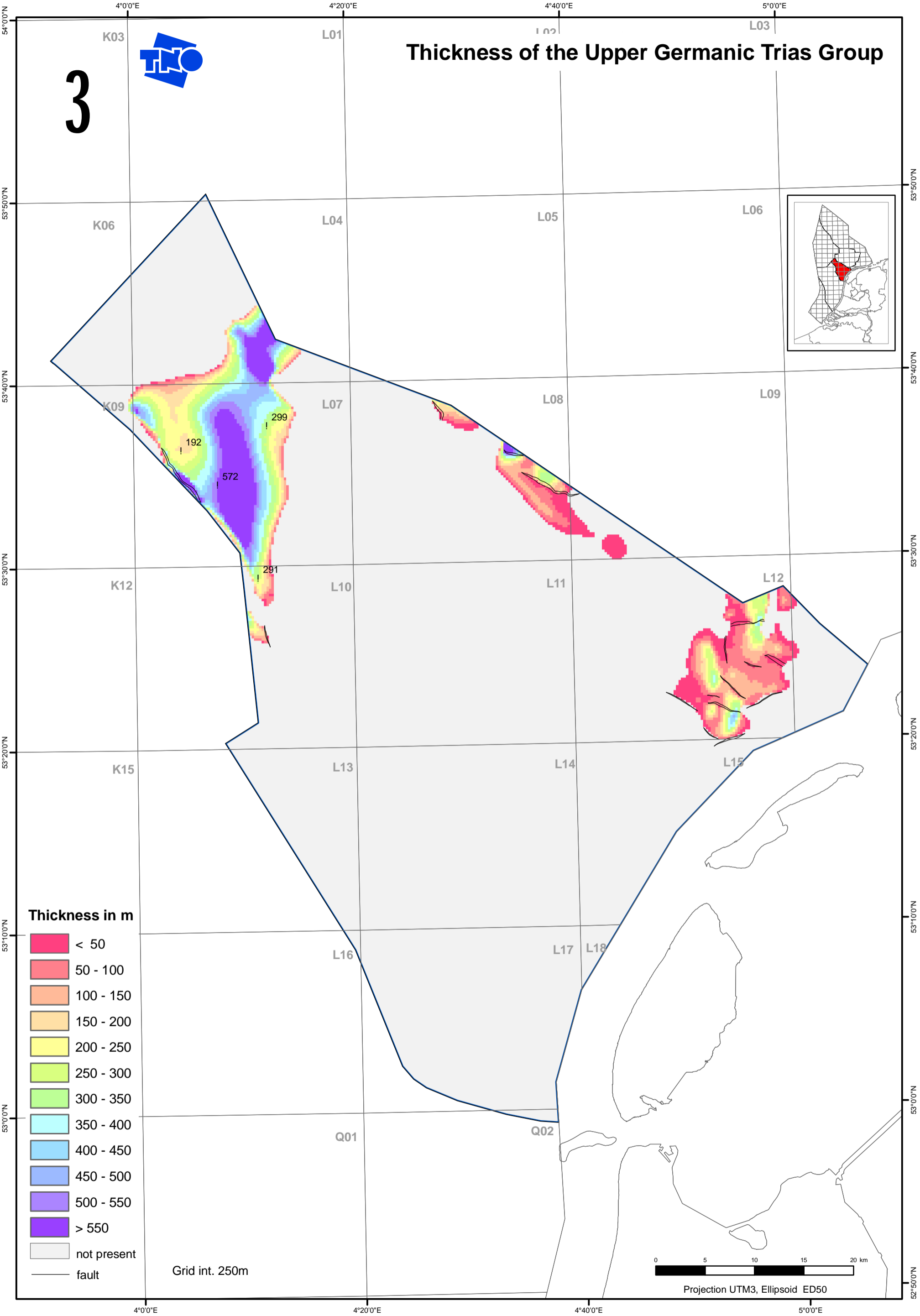


3



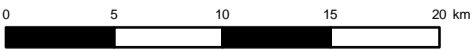
Thickness of the Upper Germanic Trias Group



Thickness in m

- < 50
- 50 - 100
- 100 - 150
- 150 - 200
- 200 - 250
- 250 - 300
- 300 - 350
- 350 - 400
- 400 - 450
- 450 - 500
- 500 - 550
- > 550
- not present
- fault

Grid int. 250m



Projection UTM3, Ellipsoid ED50